

PROLINE

PROSTILT

PEDESTAL AND SLAB SUPPORTS
FOR PATIO DESIGN USING A SYSTEM





Pedestal and slab supports

COMPLETE SYSTEM-BASED SOLUTION FOR CERAMIC AND STONE PATIOS

The significance of outdoor areas, including gardens, patios, roof terraces and balconies as a place for everyday relaxation, is growing considerably. More and more owners and modernisers are seeing the importance of improving their own premises with high quality outdoor areas.

In terms of town planning, residential areas are becoming scarcer in the cities. With pedestal and slab supports, new areas can be created on roof terraces, where this has long been impossible up to now due to statics. Due to this development, high-quality patio coverings made of ceramic, concrete or natural stone slabs are increasingly being installed on pedestal supports.

The PROSTILT pedestal support system offers a high-quality solution, developed and produced in Germany. PROSTILT is the pedestal support for users who appreciate quality and freedom of design. See for yourself.

PROSTILT guarantees

- **Universal areas of use**
Balconies, patios, terraces and loggia
- **Versatile design options**
Laying with cross joints and a variety of covering patterns
- **Various covering materials**
Outdoor ceramic, natural stone and artificial stone
- **No risk of frost damage due to the slab pedestal supports**
- **Temperature-independent processing**
Cement-free system
- **Simple to process**
Fast and easy to handle
- **High level of walking comfort**
Impact sound insulation
- **High-quality facing solution**
End profile and step formation
- **Accessible design option**
Including channel set

PROSTILT pedestal supports

THE ADVANTAGES AT A GLANCE



High pressure-resistance

The adjustable foot is in an extremely stable design with a maximum load capacity of 1.2 t



Tilt stability / load distribution

Optimum stability thanks to the support foot with a diameter of around 200 mm



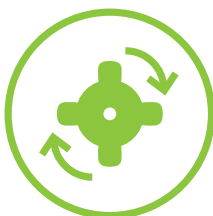
Variable installation heights

Feet adjustable to four different heights offering a range of 27–170 mm for installation heights



Infinitely variable height adjustment

Thread adjustment range up to 50 mm



Fine adjustment

Simple and fast installation due to practically-orientated adjusting screw



Side facing / accessory

Stainless steel profile and channel set

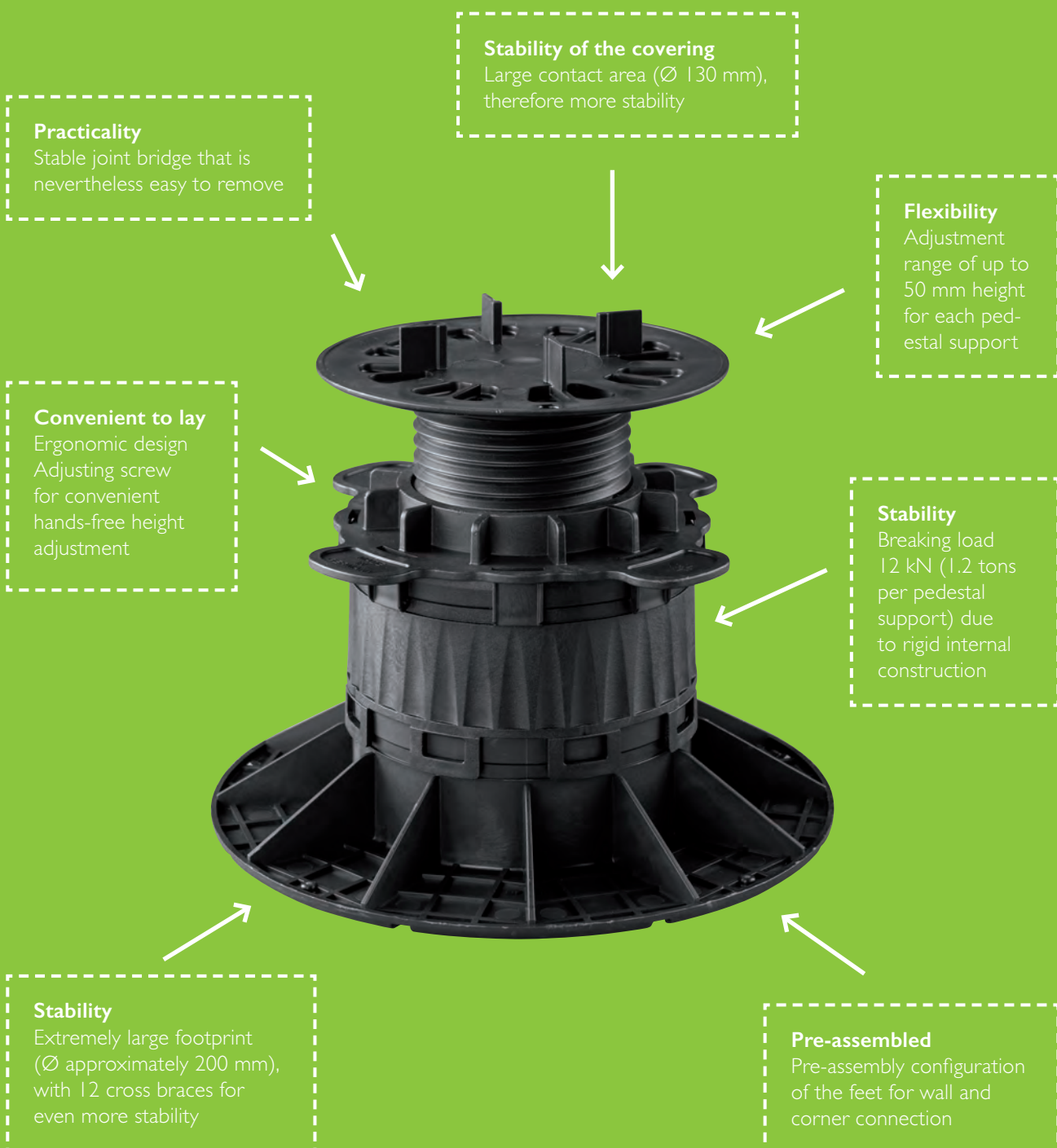
This is what makes PROSTILT so special

When developing PROSTILT we consistently pursued the objective of designing the best pedestal supports for your projects and for your everyday use. Three factors are central to this:

Quality: The best stability as well as convincing material characteristics

Flexibility: Variable building usage options and simple handling

Effectiveness: Intuitive system character as well as pre-assembly in the factory



1. How to achieve the upper limit of durability

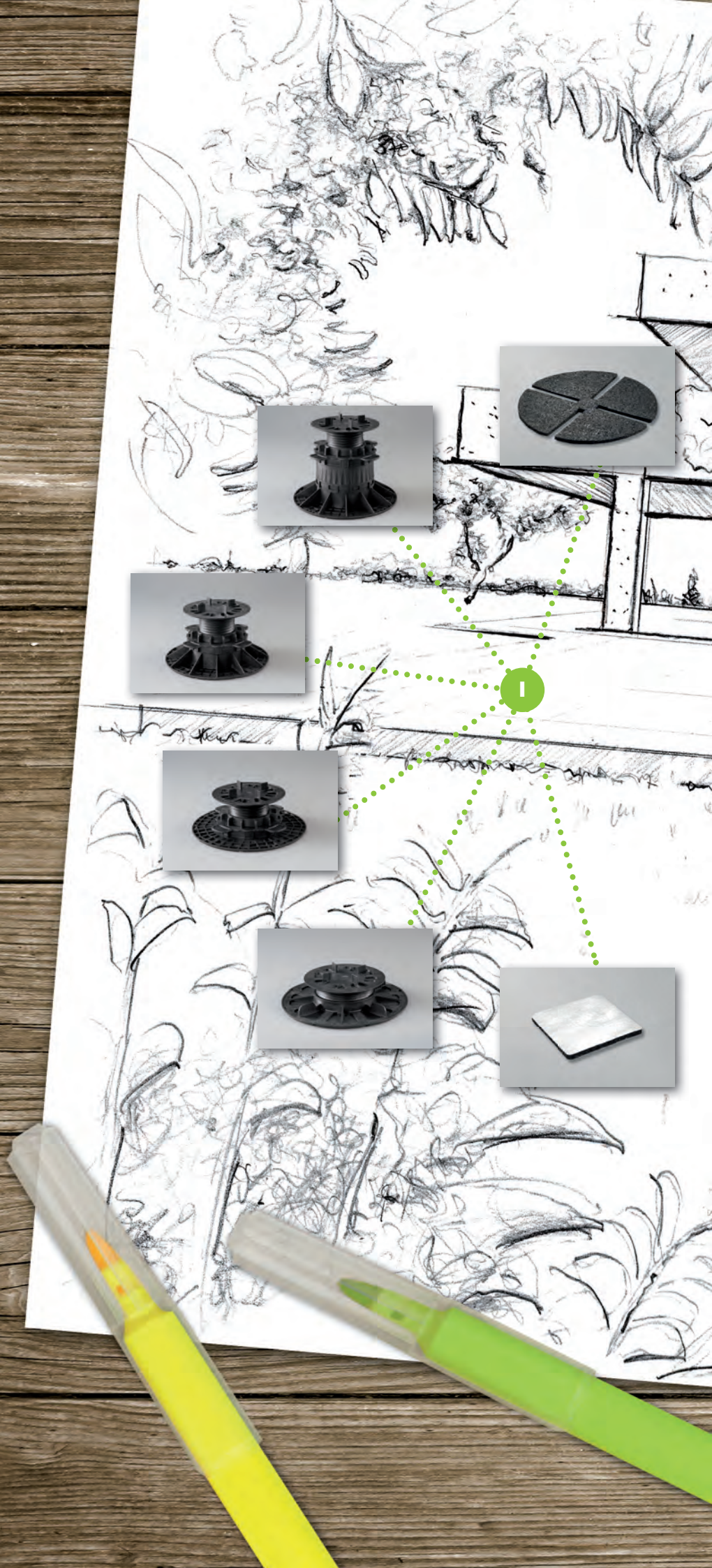
Extremely stable PROSTILT pedestal supports for heights from 27–170 mm ensure maximum flexibility. Sound impact and rubber granulate pads offer additional walking comfort and safety.

2. How to design ends and edging

With the PROSTILT facing solution the design of edge profiles is included in the system. Clever stainless steel clips secure the connection and ensure a perfect finish.

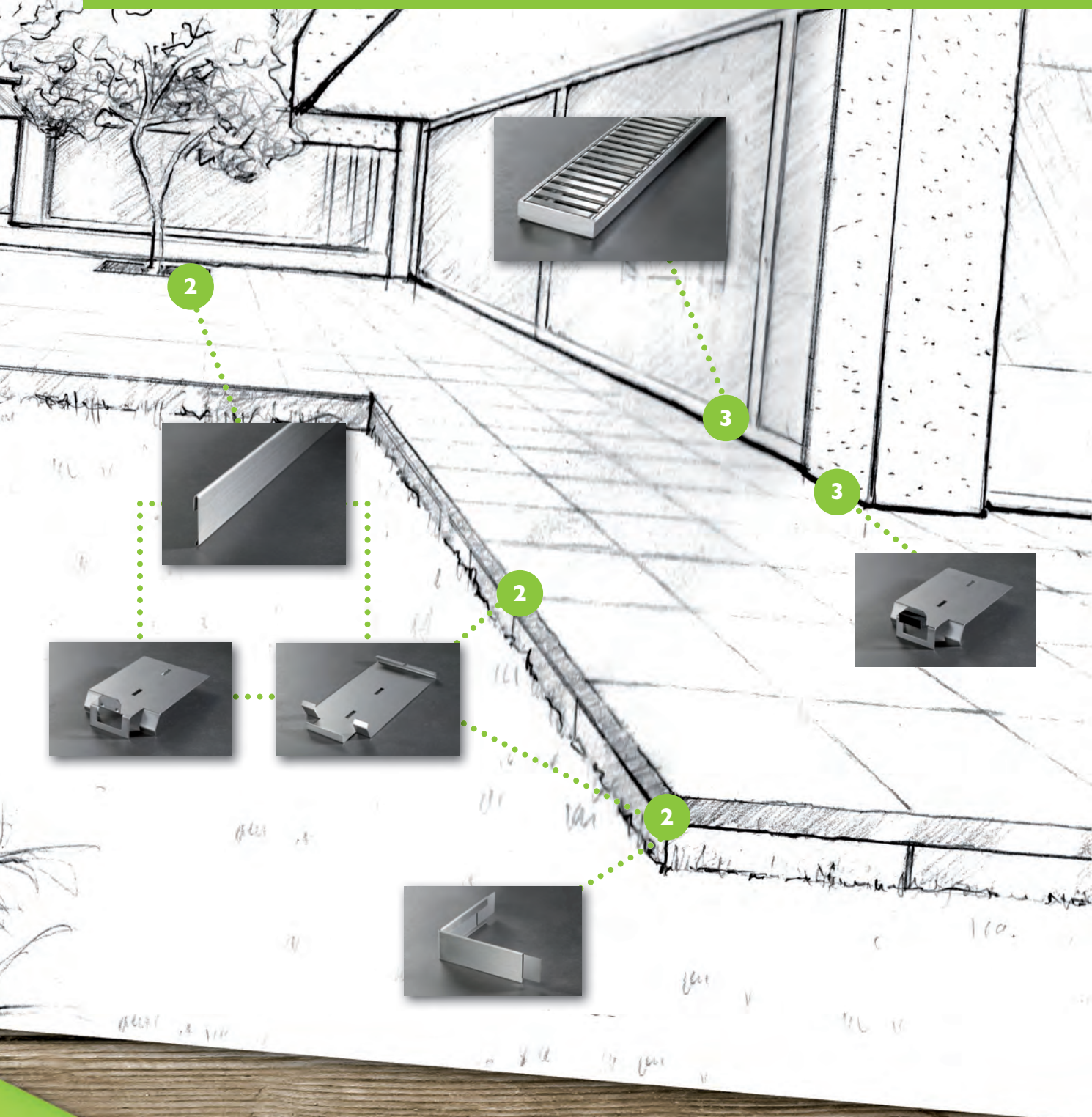
3. How to connect the patio to the house

Specially developed stainless steel clips as spacers with a neoprene pad fix the slabs and serve as an extension medium to the house. Anywhere where drainage is required, the PROSTILT channel set drains water and directs it safely underground.



PROSTILT – the system-based solution

OBJECTIVES AND SOLUTIONS FOR YOUR PATIO CONSTRUCTION



1.

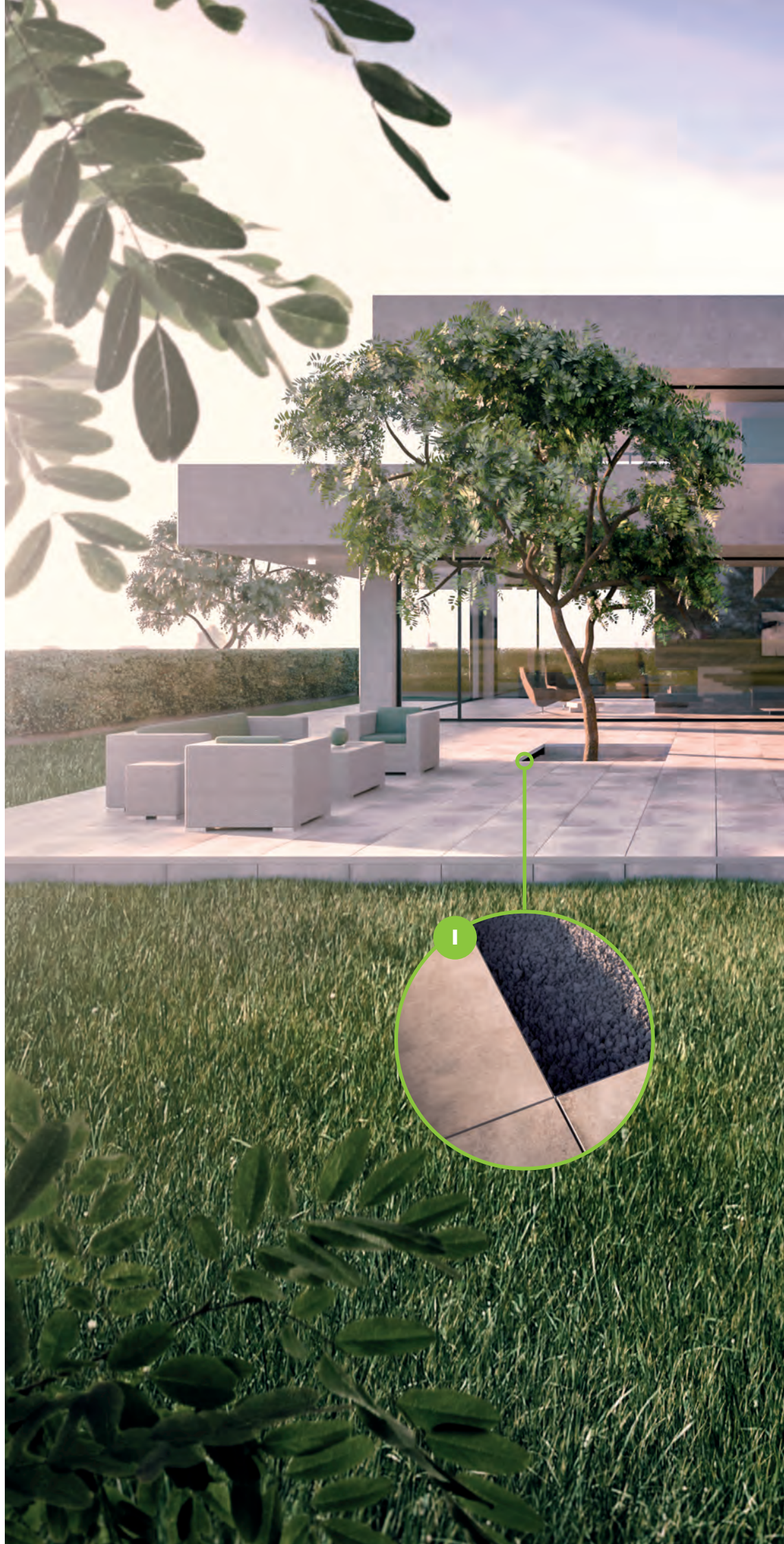
The PROSTILT system set up is designed in such a way that an even look to the joints and improved walking comfort are automatically the result. Coupled with extremely good handling for those working on it, there is a secure feeling all round for all those involved.

2.

The obvious demarcation of geometric areas is a feature of modern architecture. With PROSTILT you can skilfully plan and build the surface covering of the patio and a visually adapted riser with the same material. The stainless steel facing used therefore is an expression of value, function and design.

3.

The PROSTILT channel set is installed at the transition of window and patio and matches the look of the stainless steel facing. The spacer is extremely unobtrusive and creates a fine shadow joint with the wall.



PROSTILT – the aesthetic solution

FUNCTIONAL DESIGN FOR DEMANDING LIFESTYLES



2

3

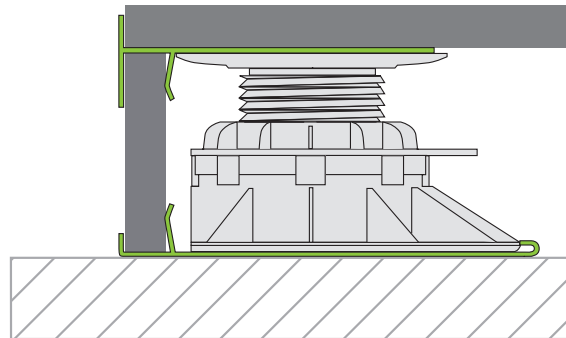
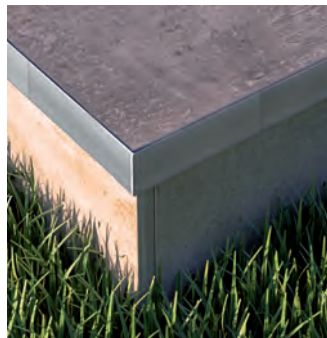
PROSTILT with facing

Laying / processing

Two clips have been developed to hold the PROSTILT facing profile (A). The lower clip (B) is positioned under the pedestal support and holds the riser in the lower area. The upper clip (C) is laid on the plate of the pedestal support and is held by the joint bridges. It fixes the cut riser to the upper edge. The upper clip also has an intake bridge (D), on which the facing profile is hung. To fix the facing profile we recommend glueing it at points using OTTOCOLL M500 hybrid adhesive. The facing profile can be shortened in length if necessary.

Facing at the corner

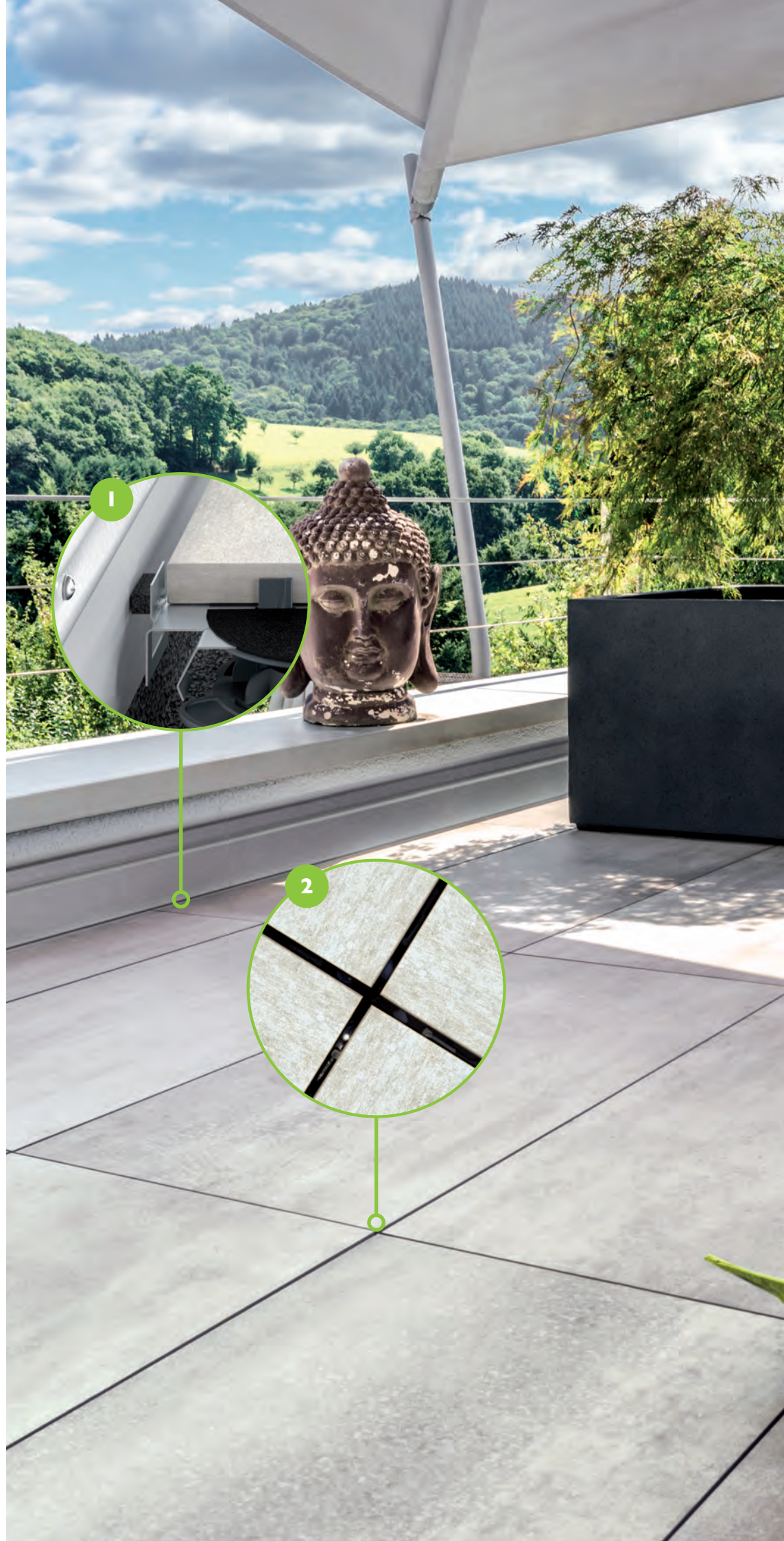
To form perfect outside corners PROSTILT offers a factory pre-prepared outside corner (E). For installation two clips are included on the upper plate and the outside corner is now hung on the intake bridges located on both sides.



Quick reader:

- Facing to form three dimensional facing connections
- Covering of the unattractive cut edges of the plates
- Masking of spalling that may arise from cutting
- Quality: Stainless steel (V2A), stable in shape, durable and modern





Due to the low weight of the system in comparison with traditional laying with gravel or bedding screed, PROSTILT can be used for a variety of projects. It is therefore possible to construct roof terraces on buildings, where this was not conceivable in the past.

1.

Roof terraces have complex sealing systems, which run vertically in the wall area and form a basin. To avoid problems with moisture caused by damage, these areas in particular must be decoupled from the terrace covering.

2.

PROSTILT pedestal supports maximise design options in (roof) terrace or patio construction. Large-sized slabs, e.g. with dimensions of 120 x 60 cm, can also be used in the same way as the broad range of modern outdoor ceramic.

PROSTILT on the roof terrace

EXAMPLE OF RENOVATION AND APPLICATION OPTIONS



PROSTILT with spacer

Laying / processing

The PROSTILT clip spacer with neoprene pad (A) can be used in the edge area of roof terraces, for example, for the transition between the patio and the masonry. This is placed on the upper side of the plate and held by the joint bridges. The spacer forms a consistent 10 mm thick joint to the wall or to the end of the roof terrace. This ensures that the seal of the roof terrace does not sustain any damage even if the surface extends or there is movement in the upper material.

Open, even joints

The integrated joint bridges of the pedestal supports ensure an even look for the joints. Furthermore, due to the open joints, thermally conditioned extensions to the length are automatically cushioned, and rainwater as well as other moisture is discharged. The terrace covering is permanently decoupled from the terrace by the PROSTILT pedestal support design as well as by the open joints. Through this, frost damage is also prevented.



Quick reader:

- Spacer with neoprene pad ensures consistent spacing from the wall
- Even look for the joints thanks to joint bridges
- Decoupling of the patio covering in all directions
- Prevention of frost damage



1.

In the areas where the patio connects to the house, it is particularly important to keep moisture away from the building. PROSTILT therefore includes a channel set that can be processed easily and makes a proactive contribution to protecting the property.

2.

With PROSTILT pedestal supports patios can be erected without the expensive and time-consuming use of binding agents such as grout. The system can even be used on existing patios to build over old ones.

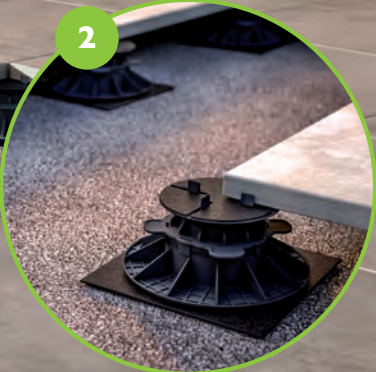
3.

Bordered patios require a secure transition from the top covering to the kerb. PROSTILT ensures a neat finish in the edge area with an almost invisible spacer clip.



PROSTILT with concrete kerb

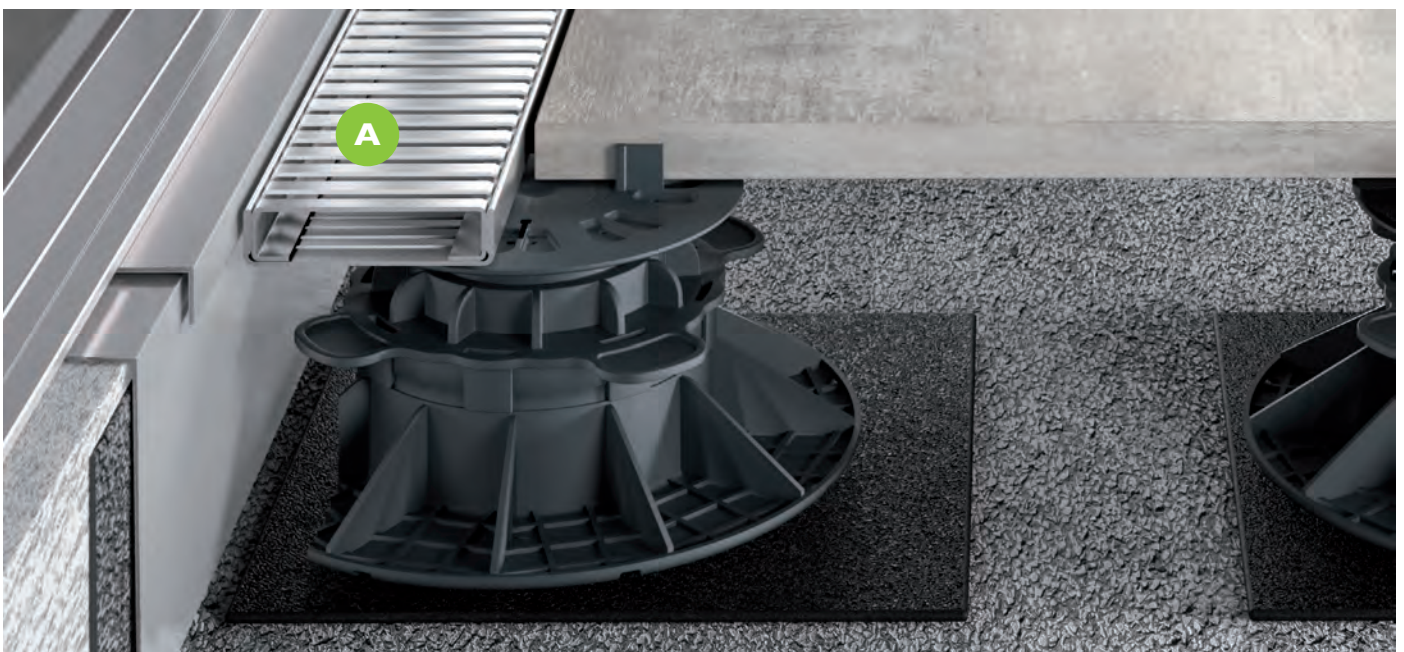
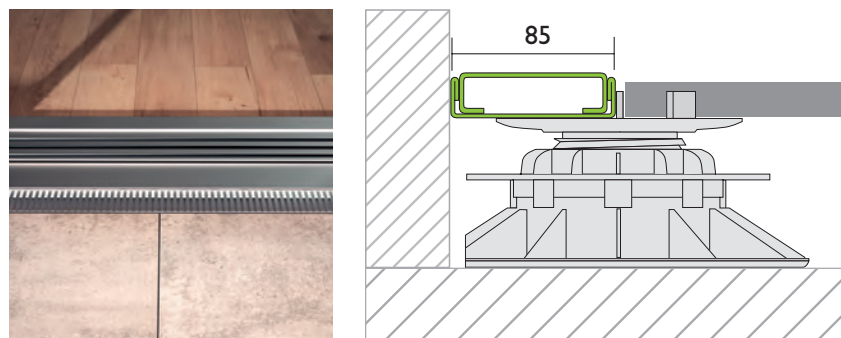
BORDERED PATIOS WITH SPACERS



PROSTILT with channel set

Laying / processing

In the transition area between patios and living areas - anywhere where French doors or lifting/sliding doors are installed, drainage lines must be built in according to DIN 18040-2 to prevent the penetration of water into the interior in the event of heavy rain or snowdrifts. The PROSTILT channel set (A) is installed directly or somewhat offset from the window depending on the structural circumstances. The channel set is placed on the half-plate of the adjustable foot and screwed into this. After this a suitable connection flagstone is laid on one side or either side of the drainage line. The drainage line is flush-mounted at the same installation height.



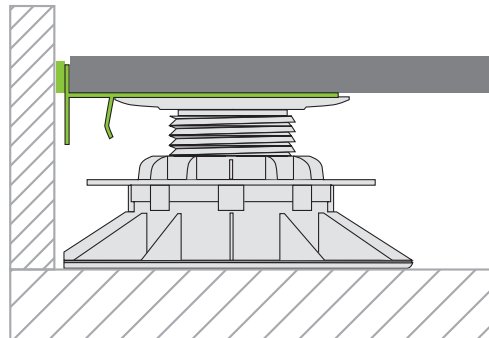
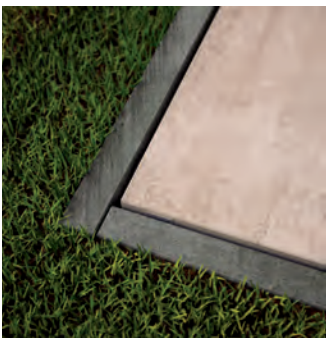
PROSTILT

laying with bordering

Bordering with artificial stone

Laying / processing

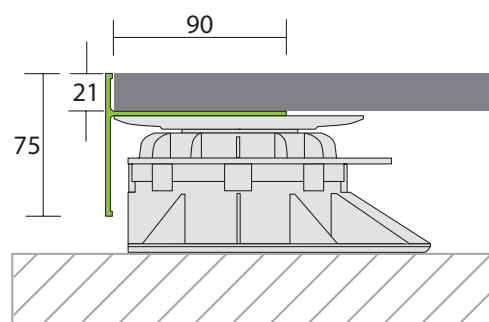
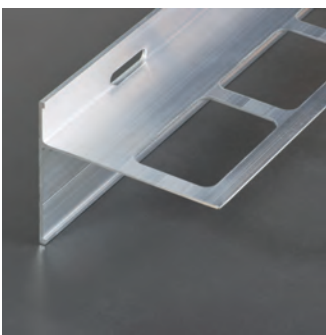
The most common form of flush installation up to now has been bordering an area with kerb. In the transition area of kerb and ceramic, however, there are always problems due to material movements. PROSTILT clips with spacers solve the problem in this case. They protect the ceramic and fix the slab to the bordering.



Bordering with PROFORM TOS T profile

Laying / processing

A second solution is offered by the PROFORMTOS balcony and patio profiles at low installation heights. With the installation the punched support base is fixed to the plate of the pedestal support and is later also held by the plate's own weight. The 75 mm high gives an attractive shape and finish to the patio area.



PROSTILT installation

STEP BY STEP

Laying (standard)



Simple standard tools are required to lay PROSTILT. The adjustable foot height is determined by setting and checking the reference height.



The rubber granulate pad is placed on the ground, then the adjustable feet are set on the rubber granulate pad and the impact sound pad laid on the adjustable foot.



The adjustable feet are positioned roughly according to the grid for the slab size. For edge lengths greater than 60 cm, it is vital that another adjustable foot is used.



The adjustable foot can be quickly adjusted to the required height using the thread under the support plate of the slabs.



Using a spirit level gives the exact height of the neighbouring adjustable foot. Fine adjustment is carried out using the large adjusting screw on the adjustable foot.



The slab is then laid and the height readjusted using the large adjusting screw and a spirit level.

Customer service:
Proline offers pre-cut adjustable feet for edge and wall applications made to order.

Edge and wall connection



PROSTILT clips with spacers are required for a professional wall connection.



For wall connection the PROSTILT adjustable foot must be sawn off along the pre-marked line on the rear side.



The adjustable foot can therefore be positioned perfectly on the wall and the joint bridges for the transverse joint can be snapped or cut off.



Placement of the PROSTILT clip spacer with a neoprene pad is required to prevent the slab shifting towards the wall.



Laying the impact sound pad



Fine adjustment of the height



Laying the slab



Readjustment is carried out using the large adjusting screw on the adjustable foot.

Forming steps / facing



For a step location the clips are used above and below. A suitable PU adhesive is required for installation.



To prevent shifting under loads, the outer and corner solutions are also glued together using PU adhesive.



The PROSTILT clip is glued underneath to the rubber granulate pad using the PU adhesive. In a corner location a second clip is fixed at the top overlapping at a 90° angle.



The adjustable foot must be cut on two sides for the corner position and the joint bridges are removed. The components are glued using the PU adhesive.



The riser is placed at the bottom of the PROSTILT clip, and the clip is glued at the top to the laying plate using the PU adhesive. The riser is held at the top by the clip.



When forming the corners a second PROSTILT clip is glued at the top overlapping at a 90° angle. The PROSTILT impact noise pad is fixed using PU adhesive.



The PU adhesive is applied to the top of the holding bridge of the PROSTILT clip to insert the PROSTILT outside corner.



The PROSTILT facing profile is mounted and the facing solution is fixed using a suitable tape. After drying of the PU adhesive, the tape can be removed again.

Installing the channel sets



The PROSTILT channel set set can be used for an accessible barrier-free design.



Then the rubber granulate pad is placed on the ground.



The PROSTILT adjustable foot is placed with the cut edge placed to the wall. In this case the vertical running joint bridges are removed.



Then the PROSTILT adjustable feet are screw-adjusted to the suitable height and finely adjusted using the adjusting screw at the adjustable foot.



The protected PROSTILT channel housing is laid on the adjustable feet.



The channel housing is placed on the horizontally running joint bridges.



The covering is fitted and finely adjusted using the adjusting screw if necessary.



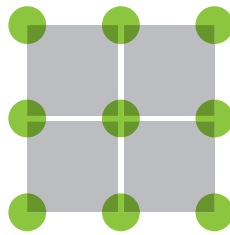
The slab covering is finally measured and laid - and it is complete!

PROSTILT pedestal supports

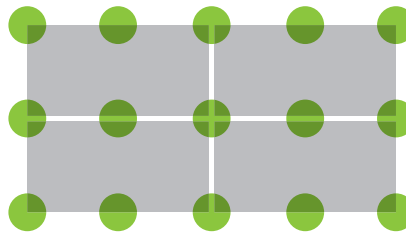
TYPES OF LAYING AND PLACEMENT

Cross joint

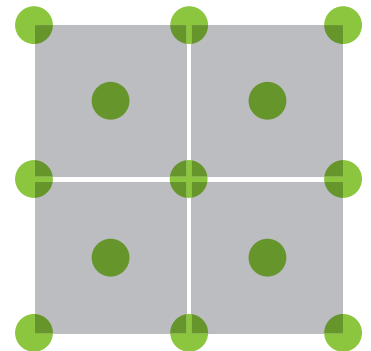
60 x 60 cm



120 x 60 cm

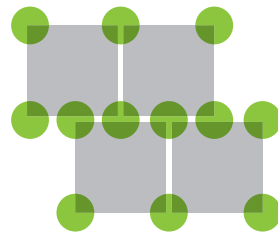


100 x 100 cm

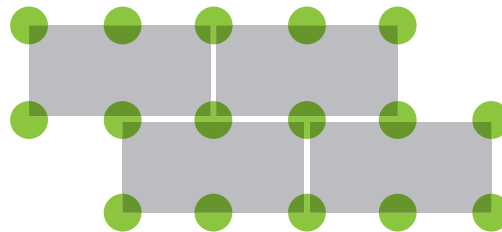


Half-offset

60 x 60 cm

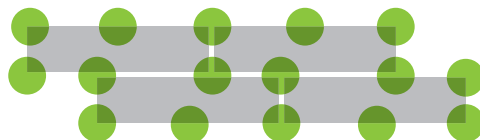


120 x 60 cm



Running

120 x 30 cm



You will find the
calculation key here:



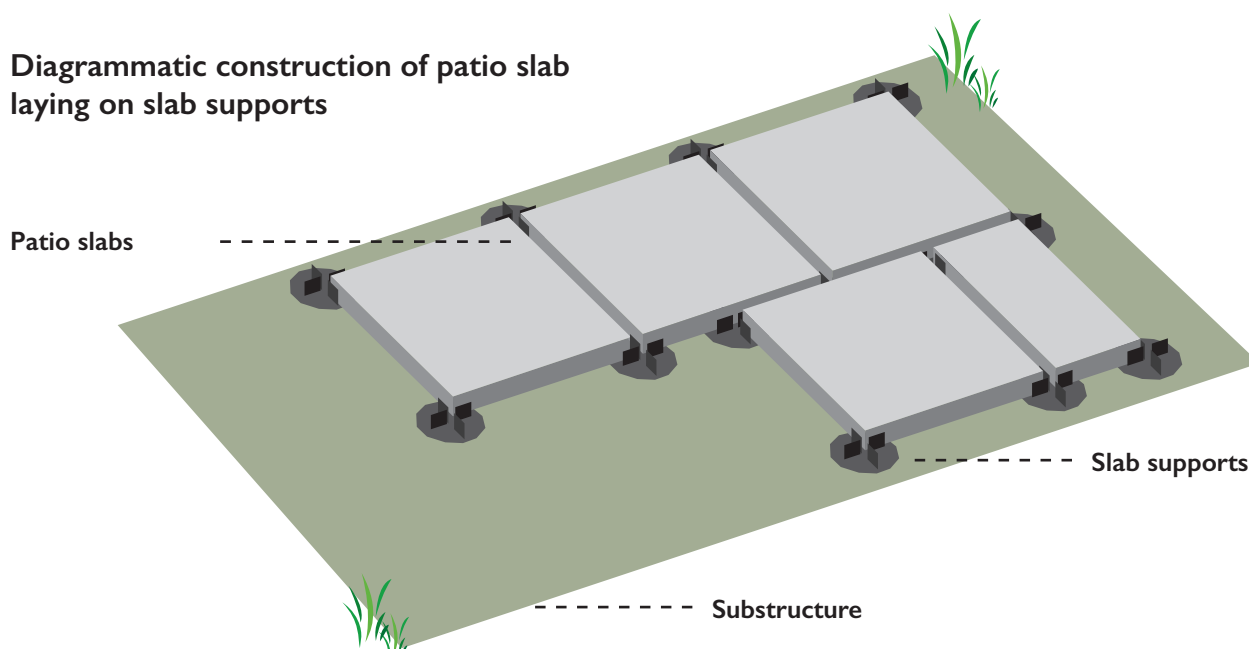
If the axial dimension of the slabs to be laid is more than 60 cm, the slab is to be laid in the axis with additional pedestal supports.

PROSTILT slab supports

PROSTILT slab supports can be used anywhere where heavy patio slabs made of concrete or natural stone are to be laid on even surfaces. Old patio coverings that have become unsightly can be simply overbuilt using PROSTILT slab supports.

Even joints of professional quality can be quickly and simply achieved using the slab supports. The slab supports consist of soft rubber and have a beveled underside as well as an integrated joint bridge on the top side. The elasticity of the material makes the direct laying of PROSTILT slab supports possible on bituminous sheeting, for example, without damaging this.

Diagrammatic construction of patio slab laying on slab supports



Quick reader:

- PROSTILT slab supports are produced in Germany
- Available in heights of 10 and 20 mm
- Easy to process: Corner and edge pieces can be broken off easily
- High stability due to large laying surface
- Compensation of height differences using compensation discs
- Drainage through open joints
- Frost damage is avoided due to decoupling

PROSTILT slab support
10 mm and 20 mm



PROSTILT Compensation disc
for slab plates
Ø120 mm





Proline Systems GmbH

Kratzenburger Landstrasse 11-15
Industriegebiet Hellerwald
56154 Boppard – Germany

Tel. +49 6742 8016-0
E-mail info@proline-systems.com
Internet www.proline-systems.com