

PROLINE

# PROCHANNEL

LINEAR DRAINAGE FOR PERFECTION  
FLUSH WITH THE FLOOR



# Elegant drainage


---

The barrier-free shower is the highlight of the modern bathroom. Proline offers two systems that combine elegant design with proven function for linear drainage in barrier-free showers with its PROCHANNEL*p-line* and PROCHANNEL*s-line*. Featuring either primary drainage or primary and secondary drainage, they offer a wide assortment of options sure to meet all of your design needs.

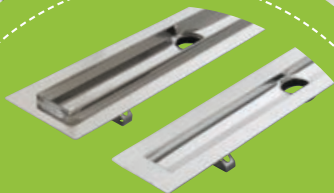
## **The PROCHANNEL drainage line: reliable, versatile, beautiful.**

---

- **A tried and tested system ready for creating combinations**
- **Aesthetically pleasing design variants for extensive design freedom**
- **Universal installation options starting from a height of 52 mm**
- **Variety of lengths with exceptional drainage performance**
- **Flexibility in the choice of installation position**



State-of-the-art design: The tile recess lets you integrate PROCHANNEL drainage systems into flooring so that they are virtually invisible.



**PROCHANNEL** *p-line*  
with fixed frame

**PROCHANNEL** *s-line*  
with adjustable frame

# PROCHANNEL *p-line*

---

## PRIMARY DRAINAGE WITH A CLEANLINESS GUARANTEE

Thanks to the frame fixed to the drainage line housing, the PROCHANNEL *p-line* lets you create a clean transition between tile flooring and the channel. You can create the slope easily and effectively; water from showering flows over the surface of the tile into the drainage line housing.



- **With fixed frame for flooring up to approximately 12.5 mm thick**
- **With fixed frame for natural stone flooring from 15 to 20 mm thick**
- **Seven different covers available for meeting the most demanding design needs**

PROCHANNEL *p-line*  
with Classic design grille  
made of stainless steel.

# PROCHANNEL *s-line*

---

## SECONDARY DRAINAGE WITH AN ELEGANT SHADOW GAP

The height-adjustable frame of the PROCHANNELs-line lets you adjust the cover to the desired tile thickness with ease. While water from showering can be guided to the drainage line housing over the surface of the tile flooring, seep water accumulating in the bonding gap goes into the drainage line housing through the sealing level.



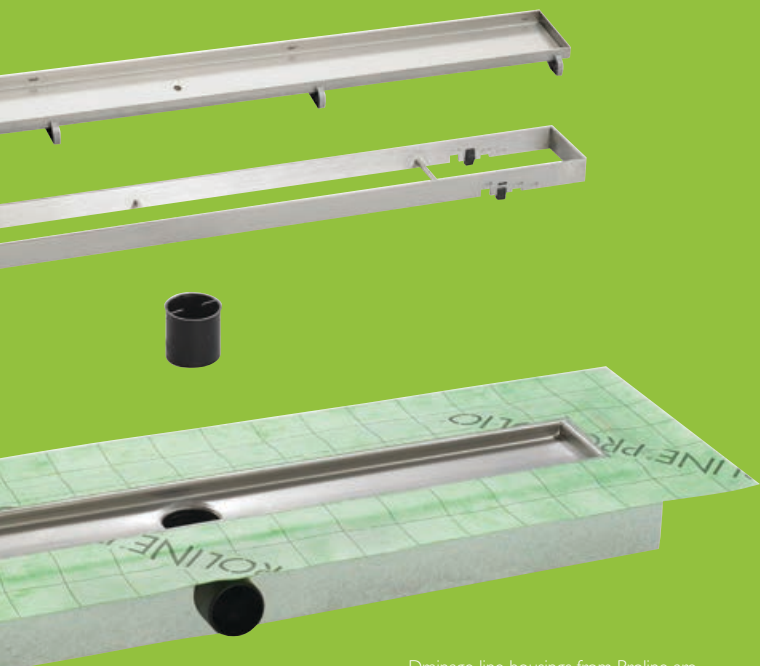
- **With 4-way adjustable frame for flooring of 10–17 mm**
- **Ideal for natural stone flooring**
- **Seven different covers available for meeting the most demanding design needs**
- **Installation with elegant shadow gap available as an option**

PROCHANNELs-line with an elegant shadow gap.

# System with versatility

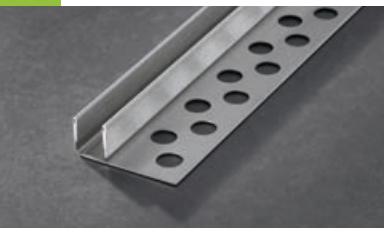
---

Whether you decide on the PROCHANNEL*p-line* with primary drainage or the *s-line* with primary and secondary drainage, we offer a modular system featuring one-of-a-kind flexibility and design possibilities in combination with our drain pans and tested seals. The individual parts of our drainage and sealing systems work together perfectly and guarantee the best results.



Drainage line housings from Proline are also available with EPS housings and a sealing liner permanently bonded in place – letting you impress your customers with fast, straightforward installation!

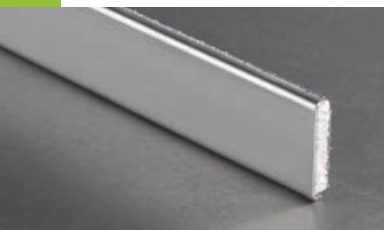
## EVERYTHING FOR INSTALLATION



Glass holder profiles made of V2A stainless steel, brushed



Slope profiles made of V2A stainless steel, brushed



Wall covers made of V2A stainless steel, brushed with mortar carrier on reverse

Additional accessory products and detailed specifications are available on [www.proline-systems.com](http://www.proline-systems.com).



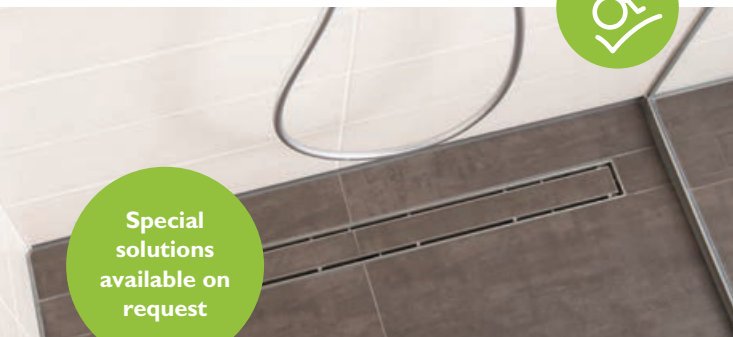
### **PROCHANNEL linear drainage: Application videos for professionals**

Our application videos guide you to the perfect installation results step by step. You can view the videos directly on your smartphone using the printed QR code.

# Linear drainage with PROCHANNEL from Proline

---

- **For comfort and convenience in barrier-free showers without any compromises**
- **Ideal for large-format tiles and natural stone**
- **Installation anywhere with a variety of lengths and excellent drainage performance**
- **Aesthetic design thanks to high design freedom**
- **Ideal for residential use as well as in public buildings and hotels**



**Special  
solutions  
available on  
request**

## **Proline Systems GmbH**

Kratzenburger Landstr. 11–15

56154 Boppard – Germany

Phone +49 6742/8016-0

E-Mail [info@proline-systems.com](mailto:info@proline-systems.com)

Internet [www.proline-systems.com](http://www.proline-systems.com)