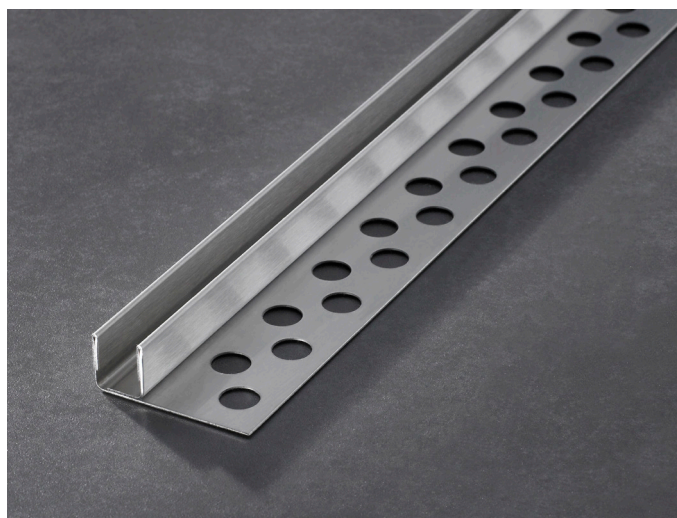
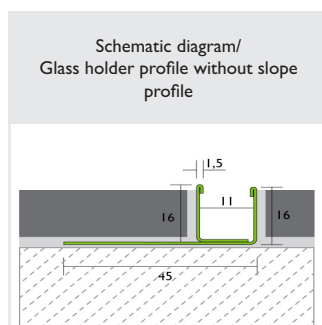
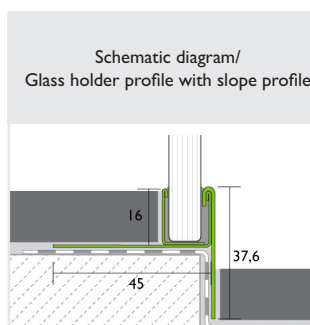


# PROCHANNEL glass carrier profile

Stainless steel 1.4301 (V2A)

# PROLINE

## U-shaped stainless steel profile for holding glass panes with a thickness of 8-10 mm



### Fields of application:

The PROCHANNEL glass holder profile is an aesthetically appealing holder profile made of 1.4301 (V2A) stainless steel for holding glass partitions in walls and floors. At the same time, it protects the bonding seal on floors and wall surfaces because it is integrated into the surface layer as part of tile-laying work. The PROCHANNEL glass holder profile is designed so that it can reliably hold the PROCHANNEL slope profile in applications at floor level.

The design of PROCHANNEL glass holder profile is matched to the coverings in order to reliably withstand the loads experienced in domestic and public interior spaces for years to come with a high level of application safety during installation.

Typical areas of application are, e.g.:

Holding glass elements in floor-level showers in combination with the PROCHANNEL slope profile.

As a holder profile for shelves made of glass or plastic.

### Product advantages:

- PROCHANNEL glass holder profiles are easy to install
- Protects the bonding seal system since physical assembly of the glass holder later on is no longer required.
- High-quality 1.4301 (V2A stainless steel) material with brushed surface
- Protection from mechanical stress

### Delivery form:

Profiles individually wrapped with protective film. Packed in a dispatch box.

Packaging unit	1 units
Stainless steel customs tariff number	73089098

For batch quantities and packaging units, please refer to the price list, the relevant price sheets or product news sheets, or speak to your specialist dealer.

### Technical data:

Material: Brushed 1.4301 stainless steel

Length [m]	1.0 / 1.48 / 2.1
Width [mm]	45
Height [mm]	16
Holder opening [mm]	11

### Storage and transportation:

Store and transport in dry areas protected from frost, dirt and other foreign matter. Do not place any load on the profiles and preferably store in lying position to avoid any risk of deformation. Protect the profiles wrapped in plastic from direct sunlight and UV radiation.

# PROCHANNEL glass carrier profile **PROLINE**

Stainless steel 1.4301 (V2A)

## Environmental protection and disposal:

Profiles that have been cleaned of their flexible seal can be disposed of in a metal recycling container. Observe local authority regulations respectively.

## Supplementary products



### PROCHANNEL slope profile made of V2A brushed

For installation with glass carrier profile, available in 1,00m, 1,48m or 1,95 m length, each in a left-hand or right-hand design as well as with or without mortar carrier



### PROFOLIO compensation corners

PE film, fleece-backed on both sides  
Height compensation of approx. 20 mm  
Item no. 93528 (left)  
Item no. 93529 (right)



### PROFIX DS sealing gels

Sealing gels for bonding seal  
2-component, 3,5 kg container  
Item no. 93784



### PROCHANNEL wall cover V2A brushed with mortar carrier equipped on the back-side

Item no. 95356 (Height 25 mm, Length 1,48 m)  
Item no. 95357 (Height 35 mm, Length 1,48 m)

## Laying/working:

### Preparatory measures/site planning

The surface to which the product is being fitted must be sturdy, dry, level, straight, flush and horizontal, free of parting agents and solvents and suitable for the bonding substance.

### Working

Match the PROCHANNEL glass holder profile to the intended covering thickness. For installation, the upper edge of the profile must always be at the same height or lower than the adjacent covering edges. Check the profile for damage; only use undamaged profiles. Remove any protective film from the visible sides of the profiles

before fitting.

Use a suitable metal saw or cutting disc for cutting pieces to size. Deburr the cutting edges.

Ensure that the cutting discs or other tools used here have not previously been used to cut or have come into contact with iron or other steel.

Work the PROCHANNEL glass holder profile with perforated side piece into the freshly laid adhesive completely. Connect the covering so that the top edge of the profile is flush with the top edge of the covering (the profile must not be higher than the covering surface). Plaster over the perforated fastening piece with tile adhesive, covering it completely. The various coverings have to be laid completely and snugly in the area around the profile.

When assembling the glass elements, glazing tape must be installed in the groove of the profile beforehand. Use suitable spacers if necessary. Seal the joints with silicone.

Clean the profiles of alkaline media, such as adhesive mortar and grout, immediately after installation.

The joint between the flooring/covering and the profile should be filled completely with grout or silicone.

## Chemical and physical resilience:

If subjected to a chemical load, the chemicals that may be present and their compounds should be checked to determine whether they have any corrosive or damaging effect on the material of the profiles. This also applies to the cleaning agents and their correct dosage and use during routine cleaning.

Once the adhesive and joint filling compound has hardened, the PROCHANNEL glass holder profile can be subjected to a mechanical load corresponding to typical usage in a living area.

Check cleaning tools and their equipment with bristles and abrasive polishing pads to see if they scratch the surface.

## Basic cleaning/Routine cleaning

Only clean with pH-neutral agents that do not contain abrasive surfactants. Ensure the profile is not subjected to cleaning or stress involving sanding or grinding. While stainless steel is an extremely durable material, cleaning chemicals should not be allowed to dry on the material if possible. Therefore, use clean, clear water to rinse the material. Otherwise, traces of corrosion may become visible after prolonged contact.

# PROCHANNEL glass carrier profile **PROLINE**

Stainless steel 1.4301 (V2A)

## Standards and regulations:

- ATV DIN 18352 Tile laying work
- ATV DIN 18332 Natural stone work
- DIN 18202 "Tolerances in surface construction"
- ZDB bulletin "Expansion joints" (last version)
- ZDB bulletin "Coverings exposed to heavy loads" (last version)
- ZDB bulletin "Bonding seals" (last version)
- Generally recognised rules of the trade and technology

## Important information:

- Iron particles from tools, scaffolding, transportation devices, etc. must be removed without delay. Grinding/sanding dust, swarf and welding splashes from structural steel work accelerate the rusting process when left on stainless steel.
- If filling joints with reactive resins, first check if they damage the surface of the profile and check to ensure they can be removed completely.
- Protect the protective film from sunlight and remove completely before installation. Remove mortar or adhesive immediately by washing clean.

*All information, references, instructions, basic engineering principles, regulations, standards and expertise are based on German and largely equivalent European regulations and training standards, irrespective of additional country-specific supplements and amendments.*

*All our specifications are based on our experience and careful analysis. We are unable to examine or influence the diversity of associated materials used and the various construction site and processing conditions in detail. Fulfilment of an imposed work order and verifiable functionality of the object therefore depends on the observation of current VOB rules and the recognised rules of technology.*

*Our details do not absolve the accountable planner's and fitter's obligation to assess - on their own authority - the building conditions and practicability of the products. In case of doubt, carry out your own tests or seek technical application advice. Please refer to the laying and processing guidelines of the floor covering manufacturers or the manufacturers of associated products.*

*All product data sheets previously published are superseded by this product data sheet once published.*

© Proline Systems 2016 – We grant our customers the permission of reproduction and transfer to their customers, provided that clear reference is made to our copyrights. All other rights reserved.

# PROCHANNEL glass carrier profile **PROLINE**

Stainless steel 1.4301 (V2A)

**„Individual item technical specifications“ tender wording for  
PROCHANNEL glass carrier profile in 1.4301 brushed stainless steel**

Quantity	Unit	Technical specifications
.....	Linear meters	PROCHANNEL glass carrier profile in 1.4301 brushed stainless steel

Deliver and properly install as holding elements pans in walls and floors in combination with floor-level showers an in combination with Proline slope profiles.  
The processing instructions from the manufacturer must be observed.

Profile length: .....mm  
 Item no.: .....  
 Material: ..... € /m  
 Pay: ..... € /m  
 Total price: \_\_\_\_\_, \_\_\_€