

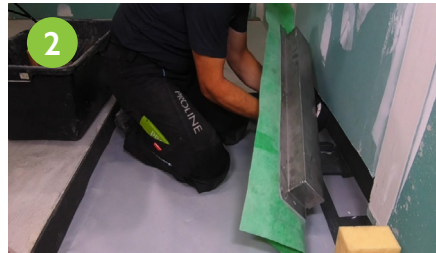
PROCHANNELw-line

Tools: Folding ruler, spirit level, agitator, silicon pistol, grout bucket or trough, trowel, toothed trowel 4 mm, smoothing trowel, sponge, cutter knife, scissors, radiator brush 40 - 50 mm width (for spreading and smoothing the PROFIX DS barrier coating)

Additional material for sealing: PROFOLIO sealing and decoupling membrane, PROFOLIO sealing tape, PROFOLIO sealing tape corners, PROFOLIO compensation corner, PROFIX DS, Ottocoll M500



1 Selection of drain pan (depends on discharge water from shower fitting and existing installation heights) and installation of the drain pan on the drain nozzle of the PROCHANNELw-line drainage line housing.



2 Connect the pipe socket of the drain pan DN 50 to the sleeve of the drainage pipe. Use of lubricant is recommended.



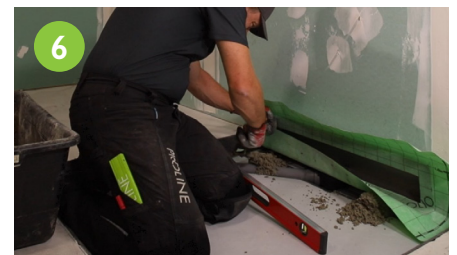
3 Align the drainage line housing with the wall and the adjoining surfaces and take the mean. Position the drainage line housing in such a way that ensures a gradient to the drainage line housing of 1.5 - 2 %.



4 Apply Ottocoll M500 hybrid adhesive and sealant to the stainless steel flange at the rear of the drainage line housing. The adhesive surface must be free from dust and grease, if required, clean the surface with isopropanol.



5 Water sample: Pour the water into the drainage line housing and check the spigot joint for tightness.



6 Undergird the drainage line housing with the sloping screed. Make sure that the drainage line housing is well embedded in the screed floor. Cavities below the drainage line housing must be avoided by all means!



7 Insert the sloping screed in the intended installation site.

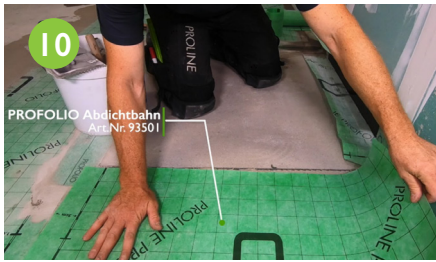


8 Level the sloping screed with the spirit level. Consider the gradient (1.5 - 2 %) to the drainage line housing.



9 Plane the screed surface with the smoothing trowel.

PROCHANNELw-line



Fit the PROFOLIO sealing and decoupling membrane to the floor areas (please refer to the product data sheet 523 PROFOLIO with PROFIX DS).



A toothed trowel with 4 mm toothing is used to apply the PROFIX DS product to the wall. The sealing sleeve of the PROCHANNELw line drainage line housing is pressed into the barrier coating free of bubbles and voids.



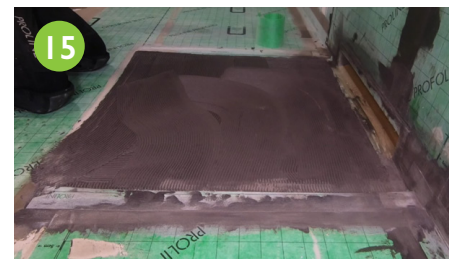
Also apply the PROFIX DS product in the floor area below the sealing sleeve using the 4 mm toothed trowel and trowel and press it into the barrier coating free of bubbles and voids.



Seal the wall areas with the PROFOLIO sealing and decoupling membrane.



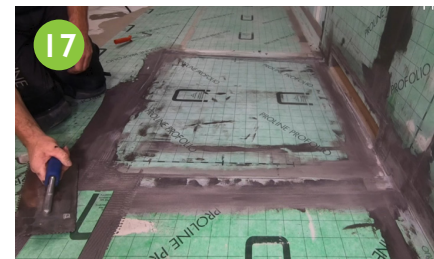
Transitions between the wall and floor are sealed with PROFIX DS and PROFOLIO sealing tape. Slope borders in the corner area are sealed with the PROFOLIO balancing edges.



Seal the complete floor area with PROFIX DS and PROFOLIO.



The complete floor and wall areas must be sealed in accordance with DIN 18534-1.



Fully sealed floor surface with PROFOLIO AND PROFIX DS. Optimum preparation for later tiling.



Remove the dirt guard from the drainage line housing.



The steel design cover or tile recess can now be inserted in the outlet of the drainage line housing.

PROCHANNELw-line

Important note:

Before inserting the drainage line housing, make sure that the mounting opening for the drainage line housing was made large enough. We recommend leaving a gap of approx. 5 - 8 mm to each adjacent wall edge.

Maintenance and care:

With its technical design and the selected materials, the shower profile can be cleaned quickly and easily. The inner gradient optimises the water drainage and self-cleaning effect. The shower profile, the drainage line housing and the profile cover are made of stainless steel, thus also providing excellent hygienic properties.

It is normally sufficient to rinse the cover with water and wipe and dry it with a soft cloth (e.g. cotton). Make sure the cloth does not scratch. For example, only microfibre cloths should be used that are suitable for surface stainless steel.

Only mild household cleaning agents should be used as cleaners. Do not use cleaners with strong acids, chlorine or bleaches. Always only apply cleaning agent briefly, wipe off and thoroughly rinse with water. In order to clean the drain, the design cover can be easily removed by hand.

All details, references, notes, applicable specialist regulations, guidelines, standards and specialist knowledge are directed towards the German, and insofar as they are congruent, to the existing European regulations and training standards, irrespective of additional country-specific extensions or modifications.

All our information is based on our experience and carefully performed tests. The variety of additional materials that might be used and differing construction and working conditions cannot be individually checked or influenced by us. The fulfilment of an outstanding service contract and the manufacturing of a demonstrable functional capability of the trades is therefore dependent on adhesion to the current VOB (German Construction Contract Procedures) regulations and recognised technological rules.

Our details do not preclude responsible planners and processors from their duty to independently assess the conditions of a building and suitable application of the products. In case of doubt, please seek technical application advice or carry out your own tests. The manufacturer's guidelines for laying and processing the surfacing material or the guidelines for other products used must be observed.

The publication of this product data sheet invalidates all previous product data sheets.

© Proline Systems 2021 – reproduction and passing on by our customers to their customers is permitted, insofar as there is a clear indication of our copyright. All other rights reserved.