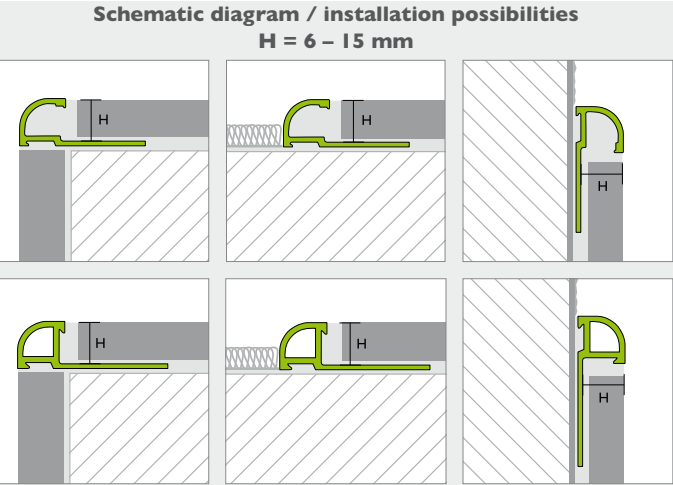


PROROUND Aluminium
coated – anodised – chrome-plated

Round-edged profiles for floors and walls



Fields of application:

Product advantages:

The PROROUND round-edged profile made from aluminium is an aesthetically appealing decorative profile with quadrant geometry for visible accentuation of edges and corners in areas where exceptional presentation is required.

At the same time, it protects covering edges against mechanical influence and damage from light knocks/impact. When supplemented with internal and external corner pieces, perfectly formed transitions are created on interior and external corners.

The design of PROROUND round-edged profiles is matched to the coverings in such a way that, with a high level of application safety during installation, the loads experienced in domestic inside areas can be borne reliably and with lasting effect.

Typical areas of application are, e.g.:

- Transitions and covering edges of a wide variety of materials (e.g. tiles, natural and artificial stone, wooden panelling, carpets and coatings on walls or other types of coverings and walls).
- Clean and decorative coverage on top of cut edges with skirting.
- Perfectly crafted finish and edge formation, e.g. for wall facing, ledges, reveals and stairs with low load.

PROROUND round-edged profiles are easy to fit. They enhance the overall impression of ready to lay surfaces decoratively through the rounded visible surfaces. The matt or brilliant anodised and colour coated profiles meet the aesthetic demands in-keeping with the creative finish of adjacent surfaces and components.

Due to different geometries, a wide variety of covering heights can be catered for. The profiles can be shortened to length on-site.

PROROUND round-edged profiles are designed to take mechanical loads (e.g. knocks, impacts and similar) along the edges of floors and wall coverings and to protect adjacent coverings. The profile is finished in aluminium and has either an anodised or chrome-plated surface treatment or is coated, making it largely resistant to the loads it encounters during later use of the surfaces as well as in terms of laying wall and floor coverings.

Specifications:			
Material Aluminium	coated	anodised	chrome-plated
Length [m]	2.50 / 3.00	2.50 / 3.00	2.50 / 3.00
Height [mm]	6 – 15	6 – 15	8 – 12.5

For details, see latest price list.

Delivery form:

PROROUND Aluminium

coated – anodised – chrome-plated

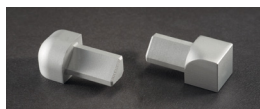
Aluminium – coated and anodised	Completely wrapped with stretch film
Aluminium – chrome-plated and high polish anodised	Profiles wrapped with protective film, ends bounds with stretch film, packed in each case in a dispatch box.
10 profiles	1 package
Packaging unit	10 / 50 / 150 items
Customs tariff number for aluminium:	76042990

For the latest order quantities (KA) and packaging units (VPE), please refer to the price list, the relevant price sheets or product news sheets, or speak to your specialist dealer.

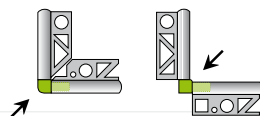
Supplementary products:

PROROUND external/internal corner pieces

- Solid aluminium, anodised or chrome-plated.
- Pressure metal cast with adapted imitated or same coated surface.



For details, surface finishes and colours, see the latest price list



Storage and transportation:

Store and transport in dry areas that are protected against dirt, impact, abrasion and other foreign matter.

To avoid any risk of deformation, do not place any load on the profiles and preferably store in the lying position.

Protect foil-wrapped profiles from sunlight / UV rays.

Disposal:

Profiles that have been cleaned of foreign matter can be disposed of in a metal recycling container. Observe local authority regulations respectively.

Thermal degradation:

No degradation if used in the correct manner.
Avoid excessive heat.

Processing:

Preparatory measures:

The surface to which the product is being fitted must be sturdy, dry, level, straight, flush and horizontal, free of parting agents and solvents and suitable for the bonding substance.

Installation:

Choose PROROUND round-edged profiles according to the planned thickness. For installation, the upper edge of the profile must always be at the same height or lower than the adjacent covering edges. Check the profile for damage – use only undamaged profiles.

To cut to the required length, use suitable clamps, saws or cutting devices as well as personal protective equipment. Deburr the edges using a suitable tool. Remove any protective film from the visible sides of the profiles before fitting.

Where the profile geometry is open, it is recommended that the profile chamber is filled in advance with a suitable backfill cord made from closed-cell PE foam on wall surfaces or with suitably pressure-resistant, hardened thin-bed mortar on floor surfaces during the course of installation.

Place the PROROUND round-edged profile with the stamped fitting strip equally in the fresh bonding compound and align. Then cover over completely. The flooring/covering material adjacent to the fitting strip must be laid so it is completely embedded.

If the surface as a whole has a joint pattern, the joint to the profile can be formed to match the joint width, though it should be no wider than 2 mm. The joint between the flooring/covering and the profile should be filled completely with grout.

Clean away any mortar/grout and adhesive residue immediately and completely using clean water and a non-abrading sponge pad or cloth from the sides of the profile on display. Bonding and joint filling substances should not dry onto the surface. Do not use abrasive bonding and joint filling substances.

Cleaning:

PROROUND Aluminium

coated – anodised – chrome-plated

Use clean water, pH-neutral cleaning agent, a sponge or cotton cloth.

Ensure that there is no sanding or grinding effect.

If necessary, use an alcohol-based cleaner or a cleaner especially developed for chrome-plated, anodised or coated surfaces or polishing paste.

Perform routine cleaning regularly in accordance with local conditions.

Chemical and physical resilience:

Before using cleaning agent or collected water, check whether it has a corrosive or damaging effect on the profiles. This also applies to correct dosage during use.

Never use agents containing hydrochloric or hydrofluoric acid.

Any contact with chlorine bleaching agents, cement residue cleaners, strong acids or alkaline should be avoided.

Anodised profiles react sensitively to potent alkaline media.

Substances containing cement or lime in combination with water can alter the surface depending on the solution and time allowed to take effect.

Coated profiles react sensitively to solvent-based substances and also to acids and bases. Avoid contact.

Always remove grout and joint compound immediately from the sides on display or mask off the visible sides to protect them.

Once the adhesive, grout and filling compound has hardened completely, the profile can take mechanical loads as per its intended use.

Abrasive influences or the use of damaging equipment or activities on the profile should be avoided. Check cleaning tools and equipment with bristles and abrasive polishing pads to see if they scratch the surface.

Standards and regulations:

In addition to the observation and consideration of relevant specialist rules, standards and generally recognised rules of technology, attention is drawn in particular to the following regulations:

- ATV DIN 18352 Tile laying work
- ATV DIN 18332 Natural stone work
- ATV DIN 18157 Fitting ceramic trim using thin-bed method
- ATV DIN 18202 'Tolerances in surface construction'
- ZDB bulletin 'Expansion joints' (last version)
- ZDB bulletin 'Flooring/covering subjected to high loads' (last version)

Important information:

- *In conjunction with the profiles, use only neutrally cross-linked silicon.*
- *If joining with reaction resins, check first if these could damage the surfaces of the profile that adhesive that adhesive and joining material can be removed completely.*
- *Due to different manufacturing processes, colour differences between the profiles and corner pieces cannot be ruled out. These are subject to the characteristic, industrial processes during manufacture.*
- *Protect any existing film against sunlight and UV light protection and remove completely before fitting.*
- *For the chemical / physical resistance of the profiles, the concentration, formulation, temperatures and compositions of the affecting substances are generally responsible. Their diversity cannot be covered here. Resistance to corrosion should therefore be checked and scrutinised in individual cases.*
- *The production processes necessitate a certain play of colours between the individual profiles and their appearance is subject to the characteristic, industrial processes during manufacture.*

All information, references, instructions, basic engineering principles, regulations, standards and expertise are based on German and largely equivalent European regulations and training standards, irrespective of additional country-specific supplements and amendments.

All our specifications are based on our experience and careful analysis. We are unable to examine or influence the diversity of associated materials used and the various construction site and processing conditions in detail. The quality and function of your work is therefore dependent on your professional construction site evaluation and utilisation of the products. In case of doubt, carry out your own tests or seek technical application advice. Please refer to the laying and processing guidelines of the floor covering manufacturers or the manufacturers of associated products. All previously published product data sheets cease to apply on publication of this product data sheet.

© Proline Systems 2018 – We grant our customers the permission of reproduction and transfer to their customers, provided that clear reference is made to our copyrights. All other rights reserved.