

PROLINE

PROVARIO Universal **Stainless steel (V2A)**

THE VARIABLE FLOOR PROFILE
WITH THE PATENTED SWIVEL
JOINT TECHNOLOGY





PROVARIO Universal transition profile in Stainless steel
(screw-down version)

Floors love PROVARIO Stainless steel

Fulfilling customer requirements

Brushed stainless steel is the ultimate surface finish when it comes to interior design. Whether door or window fittings with handles or handrails, bathroom accessories or lamps: brushed stainless steel is the hallmark of modern materiality. It goes without saying that flooring transitions don't have to be the exception. PROLINE, the specialist for floor profiles and underlay mats, presents PROVARIO stainless steel, its patented successful model with the proven swivel joint technology, now also available with a new stainless steel surface.

Innovative manufacturing process

Thanks to an innovative and as yet unique process technology, the cover profiles of PROVARIO Universal stainless steel are encased in solid V2A stainless steel. This protected procedure is as unique for floor profiles as the look itself that is achieved.



Are you already using clips or still using screws?

Screw-down design

The patented floor profile system PROVARIO is made up of three parts: an aluminium base profile (A) with integrated swivel joint (B)* and an aluminium cover profile (C) encased with high-grade, solid V2A stainless steel.

The patented swivel joint technology ensures that the cover profile can be continuously varied in height and inclination to accommodate the adjoining floor coverings. This allows different floor coverings to be connected perfectly both technically and visually. The screw heads are always flush with the surface, without any distracting protrusion, due to the four-sided screw guide.

The screw-down PROVARIO stainless steel series is available as:

- Compensator profile
- Transition profile
- Ending profile

*Applies only to transition and compensator profiles

10 YEARS'
WARRANTY*
on functionality



Actually, PROVARIO stainless steel can do both.

Clip-in design

For floating floors, we have also developed PROVARIO as a screw-less version for "clipping" together. The clip-in floor profile system comprises a base profile (A), a swivel joint and an aluminium cover profile (C), which is encased in high-grade, solid V2A stainless steel.

The special feature of PROVARIOclip is the plastic swivel joint in the base profile made of flexible, yet resilient, plastic*. The cover profile is pressed into the joint profile with the clipped bar until it rests completely on both floor coverings. If necessary, use a hammer and a hammering block to gently hammer into place.

The clip-in PROVARIO stainless steel series is available as:

- Compensator profile
- Transition profile
- Ending profile

*Applies only to transition and compensator profiles

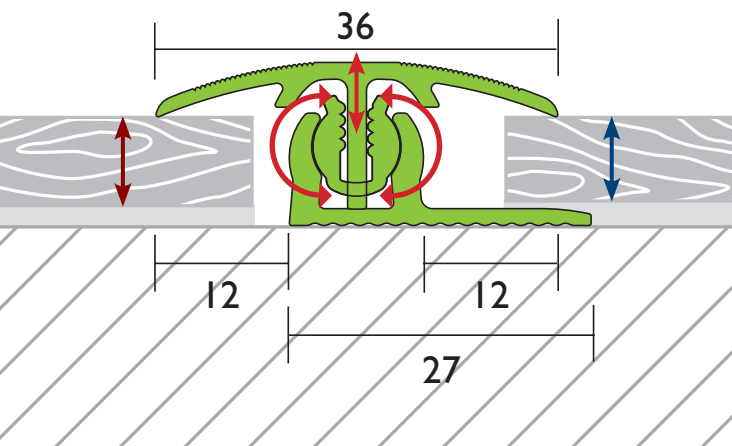
10 YEARS'
WARRANTY*
on functionality



PROVARIO & PROVARIOfclip Universal

Transition profiles

Both PROVARIO transition profiles are available with an adjustment range of 7–18 mm and in 100 and 270 cm lengths. They connect floorings with slightly different heights and are also used to cover expansion joints.



PROVARIO Universal | specifications in mm

Height adjustment 7–18 mm

Angle adjustment range 4–21 mm

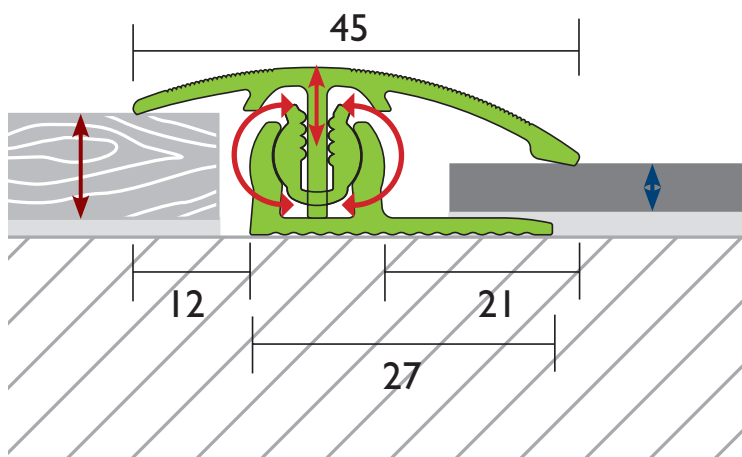
Shank	Flooring height (mm)					
on left	4	5	6	7	8	9
on right	10	9–11	8–12	7–13	6–14	5–15
on left	10	11	12	13	14	15
on right	4–16	5–17	6–18	7–19	8–20	9–21
on left	16	17	18	19	20	21
on right	10–20	11–19	12–18	13–17	14–16	15

Specifications in mm

PROVARIO & PROVARIOfclip Universal

Adjustment profiles

Both PROVARIO adjustment profiles have a short and a long shank and are therefore able to compensate for large differences in height, such as those occurring with different floor coverings. They have a height adjustment range of 2–18 mm and are available in 100 and in 270 cm lengths.



PROVARIO Universal | specifications in mm

Height adjustment 2–18 mm

Angle adjustment range 0–21 mm

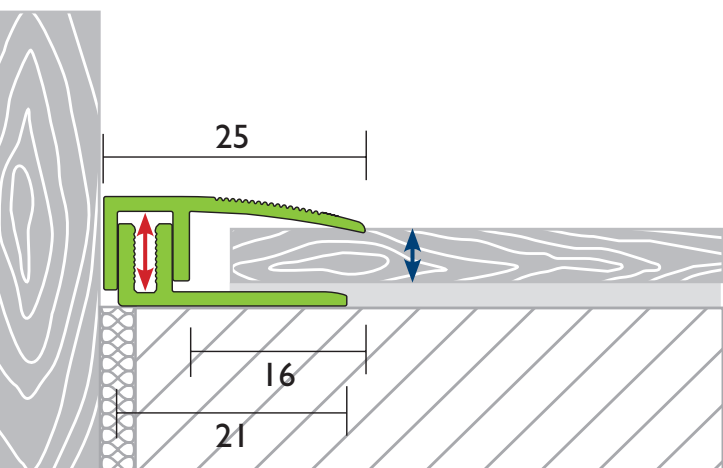
Shank	Flooring height (mm)					
on left	7	8	9	10	11	12
on right	2–7	1–6	0–7	0–8	0–9	0–10
on left	13	14	15	16	17	18
on right	0–11	0–11	0–11	1–11	2–11	3–10
on left	19	20	21			
on right	4–9	5–8	6			

Specifications in mm

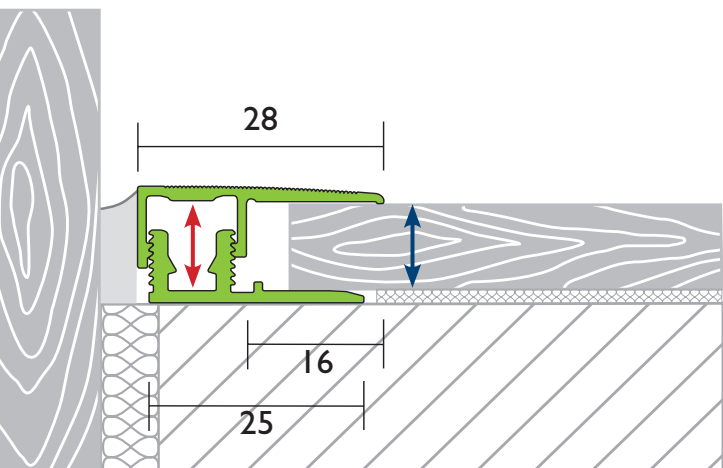
PROVARIO & PROVARIOfclip Universal

Ending profiles

The PROVARIO ending profiles are available with a height adjustment range of 7–18 mm and in 100 and 270 cm lengths.



PROVARIO Universal | specifications in mm



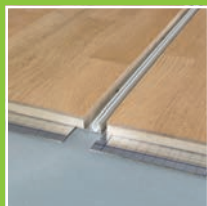
PROVARIOfclip Universal | specifications in mm

Height adjustment **7–18 mm**

Installation in five easy steps:

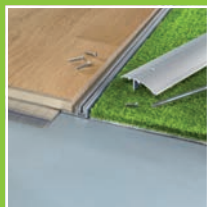
The transition profile

PROVARIOclip allows you to build the perfect bridge easily and quickly.



The compensator profile

PROVARIO allows you to create the perfect transition.



PROVARIO – for the good of your feet

In the case of adjustment and transition profiles, which are intended to compensate for different floor heights, screw heads often protrude due to the design. As most profiles are screwed vertically, the screw head cannot be countersunk flush into the inclined surface of the profile. This could mean ripped socks or even cut feet.



PROVARIO solves this problem with its patented, infinitely variable swivel joint technology. It allows the inclination of the profile to be adjusted, guarantees that the screws are fitted without protruding, and ensures that the joint between both floorings are concealed accurately and reliably.

PROVARIO – because we guarantee it!

Only a company as committed and confident as PROLINE offers a 10-year warranty on the functionality of its PROVARIO system – professional installation is a prerequisite.

Always take the points below into account when purchasing and installing the product.



PROVARIO Universal



PROVARIOclip Universal

PROVARIO and PROVARIOfclip are not only available with a solid stainless steel surface, but also with many other anodising finishes and decors.

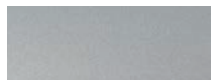
Stainless steel encasing



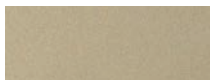
NEW
Stainless
steel V2A

Brushed V2A
Stainless steel

Anodized aluminium



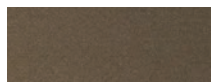
Silver



Champagne



Gold



Bronze



Stainless steel

Smooth, brushed aluminium



Silver



Champagne



Stainless steel

Aluminium covered with decorative film



Maple



Beech



Light oak



Natural oak

Aluminium covered with varnished veneer

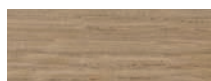


Beech



Oak

Aluminium covered with sanded veneer



Oak



Ash



Subscribe to our YouTube channel and stay up to date!



What makes the PROVARIO stainless steel floor profiles so special

- Solid stainless steel surface
- Match fittings for doors or handrails made of stainless steel
- Highlight sophisticated interior design (with stainless steel elements)
- Great flexibility with the patented* swivel joint technology
- Screw-down or clip-in floor profiles
- Connect even the extra-wide transitions

Subscribe to
our newsletter
now

*Not available with ending profiles

Proline Systems GmbH

Kratzenburger Landstr. 11-15

56154 Boppard – Germany

Phone +49 6742 80160

E-mail info@proline-systems.com

Internet www.proline-systems.com

Follow us on:

