

**alferpro<sup>®</sup>**  
**PROLINE**

**EMOTION**

tone on tone - colours that touch



# EMOTION

---

## When colour and form merge into one.

The Emotion series brings colour to form - and structure to every detail. The new line is not only visually appealing, but also tactile: seven new powder-coated sand and stone colours have been added to the portfolio - perfectly coordinated with current tile trends. Whether soft greige, deep matt black or natural stone colours: With Emotion, the transition zone between tile and room becomes a design element.

Tone-on-tone - with Emotion, you can create design accents that can be seen and felt. The hard-wearing surface and high-quality finish ensure a harmonious overall look that perfectly combines design and function. Available in stainless steel and aluminium - for sophisticated projects with a feel for nuances.

## Colours that complete rooms.

The new colours in the Emotion series create more than just transitions - they create atmosphere. They pick up on the colour worlds of modern tiles and create a calm, architecturally sophisticated overall picture. For design that blends in - and leaves an impression.



STONE WHITE



STONE CREAM



STONE GREIGE



SAND BEIGE



SAND GREIGE



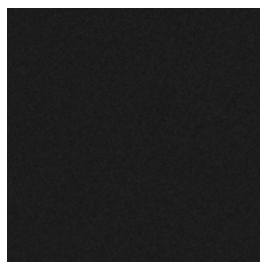
SAND GREY



STONE GREY



STONE GRAPHITE



BLACK MATT

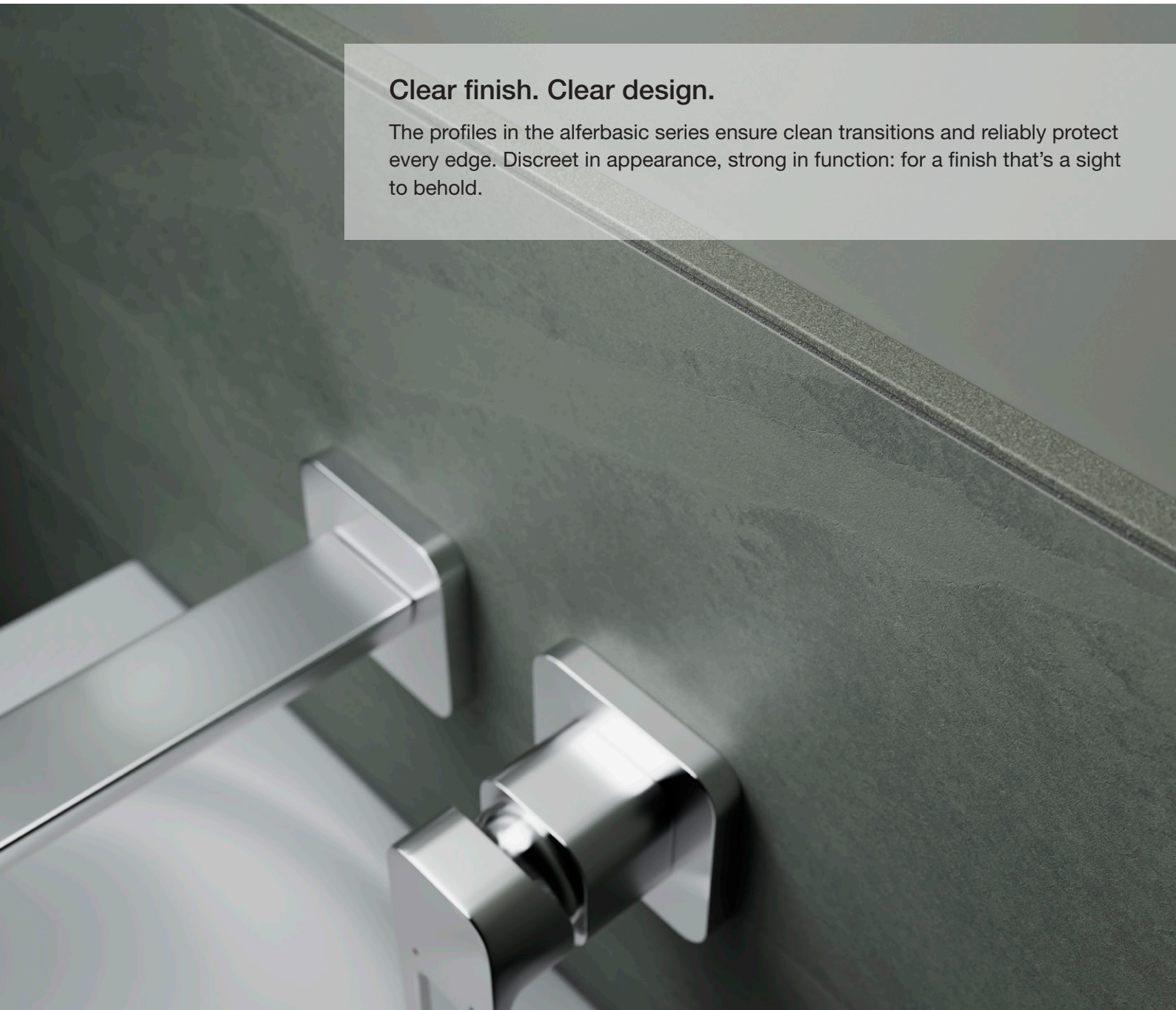


# alferbasic

## ANGLE PROFILES

### Clear finish. Clear design.

The profiles in the alferbasic series ensure clean transitions and reliably protect every edge. Discreet in appearance, strong in function: for a finish that's a sight to behold.



Heights:	6 mm, 8 mm, 10 mm, 11 mm
Length:	2.500 mm
Material:	powder-coated aluminium
Colours:	stone white, stone cream, stone greige, sand beige, sand greige, sand grey, stone grey, stone graphite, black matt



# alferquad

## SQUARE EDGE PROFILES

### Design squared.

Clear. Straightforward. Striking. With alferquad, the tile corner becomes a stage for modern design. Whether as a finishing touch or a discreet border - the square profile sets architectural accents and blends perfectly into any minimalist design.



Heights:  
Length:  
Material:  
Colours:

8 mm, 10 mm, 11 mm

2.500 mm

powder-coated aluminium

stone white, stone cream, stone greige, sand beige, sand greige,  
sand grey, stone grey, stone graphite, black matt



Corner pieces available in matching colours



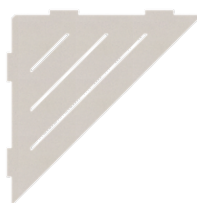
# alferstyle

## CORNER SHELVES

### Style in every corner.

alferstyle brings order with style. The high-quality corner shelves made of stainless steel make shampoo, shower gel etc. an eye-catcher.

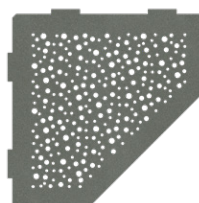
Three shapes - triangle, pentagon or arc - open up new possibilities for bathroom design. For corners that blend in harmoniously.



**Triangle**  
Stripes



**Circular arc**  
Rays



**Pentagon**  
Bubbles

Width: 200 mm  
Material: Stainless steel V2A  
Colours: stone white, stone cream, stone greige, sand beige, sand greige, sand grey, stone grey, stone graphite, black matt



# alferline

## SHOWER CHANNELS AND PROFILES

### Design meets flexibility.

Shower channels made of high-quality stainless steel - for maximum design freedom with minimum installation height. alferline stands for perfectly designed drainage in level-access showers. Technically sophisticated. Visually convincing. Uncompromisingly functional. And unobtrusively integrated.



Shower channel

Installation height:

Length:

Tile height:

Material:

Colours:

Freely variable from 60 mm - 100 mm

1,200 mm; can be individually shortened to at least 320mm

0 – 30 mm

Stainless steel V2A

stone white, stone cream, stone greige, sand beige, sand greige, sand grey, stone grey, stone graphite, black matt



Shower screen panels



Wall Slope wedge



Glass profile



Glass slope wedge



Slope wedge

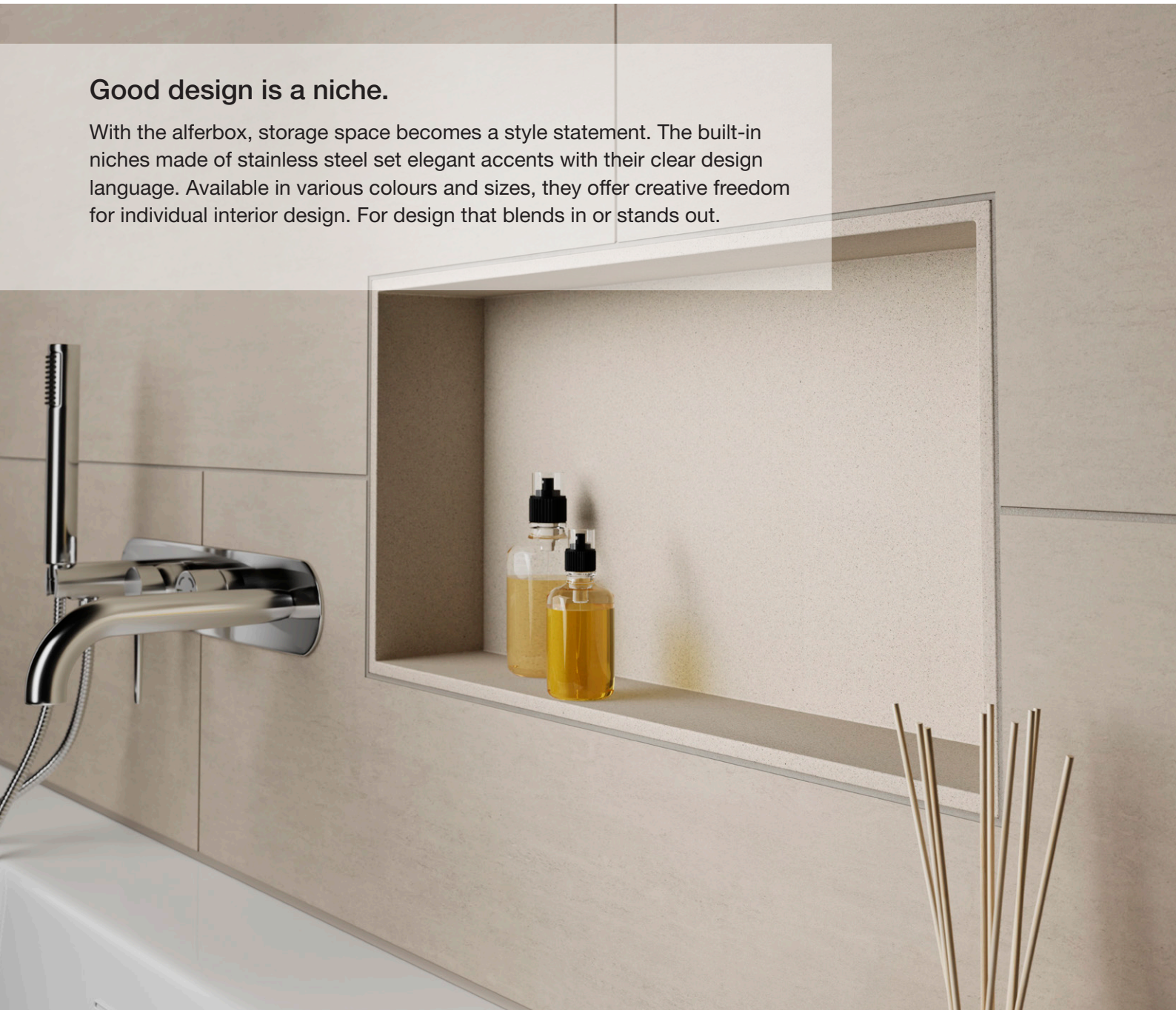


# alferbox

## BUILT-IN NICHE

### Good design is a niche.

With the alferbox, storage space becomes a style statement. The built-in niches made of stainless steel set elegant accents with their clear design language. Available in various colours and sizes, they offer creative freedom for individual interior design. For design that blends in or stands out.



Shape:	Narrow visible edge 2 mm - height: 11 mm, 15 mm Wide visible edge 10 mm - height: 11 mm, 13 mm
Width:	150 mm, 300 mm, 600 mm
Height:	300 mm
Depth:	100 mm
Material:	Stainless steel V2A
Colors	Stone greige, black matt

**alferpro® PROLINE**

Proline Systems GmbH  
Kratzenburger Landstraße 11–15 · D-56154 Boppard  
T +49 (0) 67 42 / 80 16-0 · [info@proline-systems.com](mailto:info@proline-systems.com)  
[www.proline-systems.com](https://www.proline-systems.com)  
[www.alferpro.com](https://www.alferpro.com)

**FACHVERBAND  
FLIESEN  
UND NATURSTEIN**



im Zentralverband des Deutschen Baugewerbes