

PROLINE

PROSTILTadvance

ALUMINIUM SUBCONSTRUCTION
FOR PATIOS WITH SYSTEM







Support structure & subconstruction solution

UNCOMPROMISING SYSTEMIC QUALITY FOR PATIO CONSTRUCTION OF A NEW GENERATION

Even in our part of the world, life is increasingly spent outside. Cooking in the outside kitchen, sizzling on mega BBQs and partying on roof terraces & co. – even working outside is big on trend nowadays. The new lifestyle has resulted in a boom of patio and outdoor areas with very new demands.

Outdoor ist he new indoor; that's why your customers are increasingly demanding solutions to fulfil their outdoor dream permanently, durably and significantly. Similar to a house, a solid support structure provides the foundation, crucial for the stability and preservation of every outdoor area.

With PROSTILTadvance, you are using the best from two areas to build a permanent solution without fuss or quibble: Variable, ultra strong pedestal supports form the flexible and easy to handle basis of your patio. A support structure of aluminium sections is located on top. This results in optimum rigidity of the base as well as exceptionally high load-bearing capacity, which makes PROSTILTadvance ideally suited to commercial and public areas.

QUALITY

- **Weather-resistant**
- **Maintenance-free and durable**
- **Dimensionally stable and free from distortion**
- **Extremely high load capacity**

DESIGN

- **Absolute freedom**
- **Suitable for different materials: Outdoor decking, WPC, ceramic, natural stone**
- **Combined laying (e.g. wood / ceramic)**
- **Different formats (e.g. dropping widths)**

PRACTICE

- **Simple + fast mounting (without special tools)**
- **Aluminium construction provides safety compared to wood**
- **Systemic design is the same for every project**
- **Accessories for drainage, facing etc.**

PROSTILTadvance

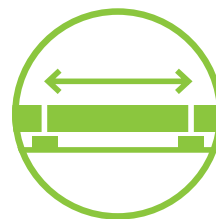
THE ADVANTAGES AT A GLANCE



Floorboards and slabs



Invisible screw connection



Large span width



High load capacity



Change of floor covering possible



Weather-resistant



Different patio shapes



Steps possible

Special features

FIT FOR OUTDOOR DREAMS

The best concept for the design of a permanently attractive patio is an even load distribution. This is the benefit of using PROSTILTadvance, the aluminium support structure for patios with system.

Practicality

Stable joint bridge that is nevertheless easy to remove

Stability of the covering

Large contact surface (Ø 130 mm), therefore more stability

Flexibility

Adjustment range of up to 100 mm height for each pedestal support

Recyclable

The material polypropylene is recyclable

Convenient to lay

Ergonomic arrangement of the adjusting screw for convenient hands-free height adjustment

Stability

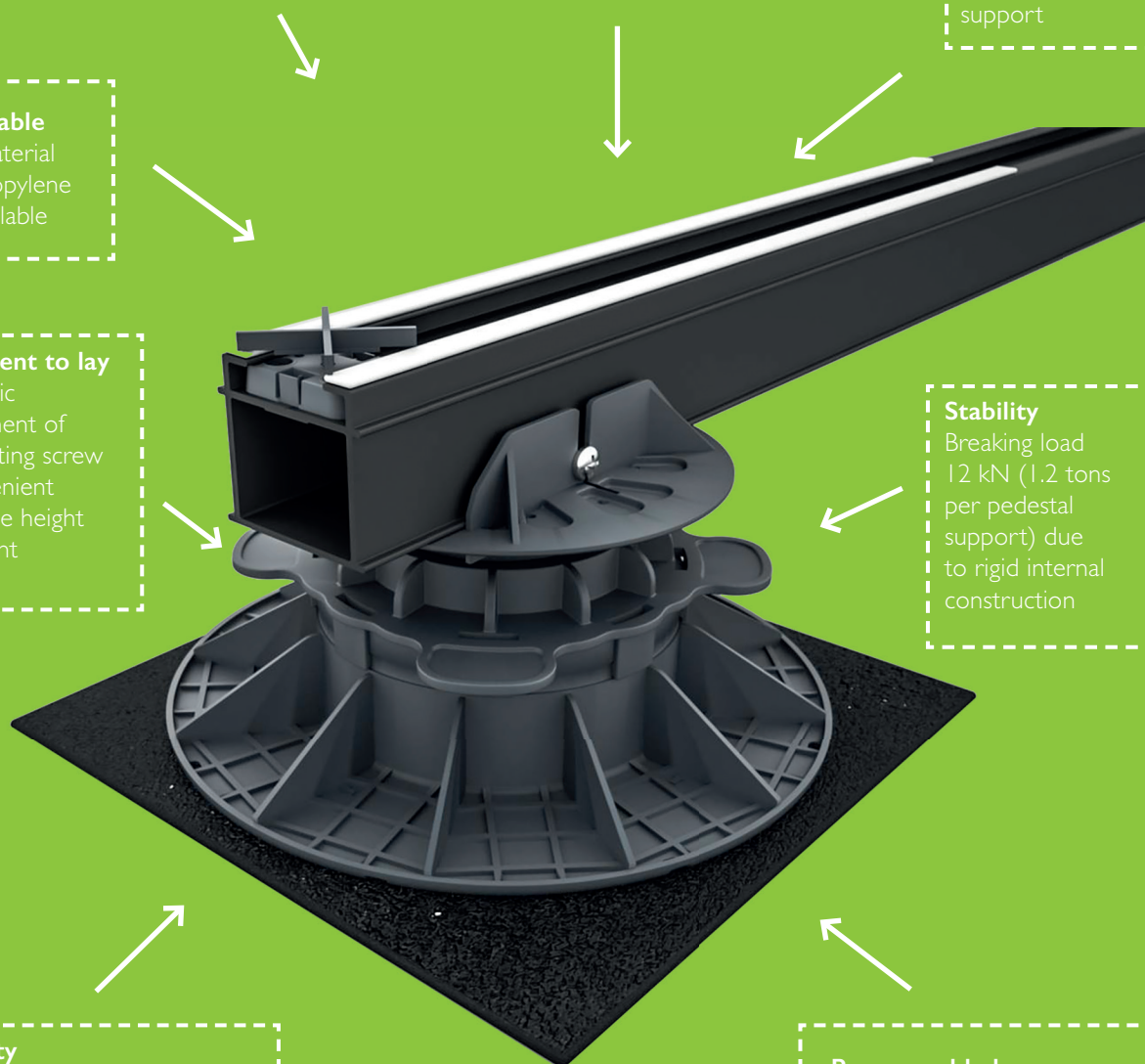
Breaking load 12 kN (1.2 tons per pedestal support) due to rigid internal construction

Stability

Extremely large footprint (Ø approximately 200 mm), with 12 cross braces for even more stability

Pre-assembled

Pre-assembly configuration of the feet for wall and corner connection



I.

The principle of PROSTILTadvance can be explained quickly. The 2.40 m long base profiles, which are available in two colours, can be extended to any length with the PROSTILTadvance Connector L. PROSTILTadvance connector Q or the flexible corner connector is used as cross connection. The connector Q can be screwed on the base profile at any position to connect another base profile. This principle can be extended in length and width as requested. The support structure is then positioned on the PROSTILTadvance adjustable feet, which can build the patio at heights between 111 and 370 mm. With the possible difference in height, levels can be offset and steps can be formed. The high bearing capacity of the PROSTILTadvance support structure also enables large span widths resulting in significantly less support points than for conventional substructures.

*Exception: at a longitudinal connection



Copyright & furniture: www.talentisrl.com, s. p. 20

PROSTILTadvance builds areas

DESIGNING SUPPORT STRUCTURES HAS NEVER BEEN EASIER



I

I.

The desire for designing outdoor areas is growing in line with the surface area that is available. For this reason, landscape architects and planners are increasingly resorting to various surface materials for their designs.

Wood and natural stone, ceramic with WPC – no problem for PROSTIL-Tadvance. How does this work? It is very simple: with fine adjustment of the pedestal supports, different covering heights can be balanced to the millimetre. This ensures that even surfaces can be designed and implemented without disruptive variations in height.



PROSTILTadvance is universal

COMBINING DIFFERENT COVERINGS



Outdoor decking is very popular in gardening and landscaping, but has properties that are difficult to control. This refers to the lack of dimensional stability as well as greying of surfaces. Regular maintenance can keep the greying in check, and a clever installation with PROSTILTadvance will stave off the natural product wood from expanding or shrinking.

1.

For option 1, simply connect the wooden decking boards with our PROSTILT Multiclip T. The clip works like a connection element, which is screwed into the substructure between the boards, thus fixing the adjacent boards in place. Advantage: Not a single screw is visible on the surface and the wood or board is not damaged in this way.

2.

Option 2 is the traditional fixing of the decking boards to the substructure by means of screws. For some aesthetes, this is the most conventional and only true fixing method. Whichever fixing method is chosen, a highly sturdy connection of the surface covering is guaranteed with the PROSTILTadvance profiles.



PROSTILTadvance loves wood

INSTALLATION OF WOODEN DECKING BOARDS

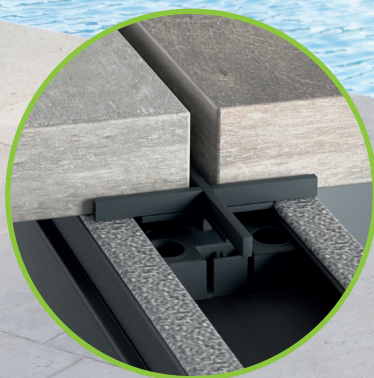


1.

For the laying of outdoor ceramic or natural stone, we have developed the PROSTILT Multiclip X with so-called X-adapter. This helpful adapter ensures an even distance of 3 mm between the boards. The clip, made of sturdy PA6 plastic, is clicked into the base rail and suitable for boards from a thickness of 10 mm.

2.

Patios with different board formats can also be easily laid with PROSTILTadvance. Our profile system serves as a supporting structure, the profiles run on minimum 2 facing edge lengths of the slabs/tiles. Due to the possibility to shorten the profiles or to individually lengthen them by means of the connector, any thinkable shape of the support structure can be realised.



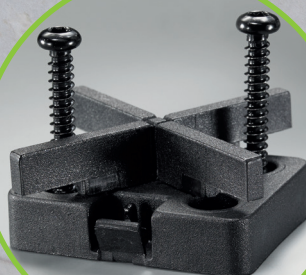
I

PROSTILTadvance and slabs

INSTALLATION OF OUTDOOR CERAMIC AND NATURAL STONE



2



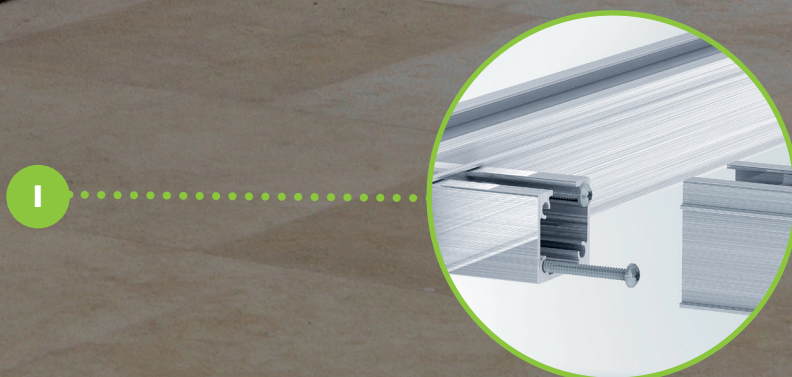
I.

Terraces have to be built solid and robust, even if they are not used at the moment. Whether in the cold winter, during autumn storms and heavy rain or even in the summer heat. PROSTILTadvance keeps its promises, thanks to maximum stability as well as no-compromise aluminium quality. Enjoy our maintenance-free system and the feeling to have made the right decision.



PROSTILTadvance withstands

MAXIMUM STABILITY IN ANY WEATHER



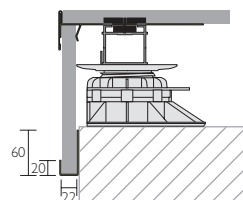
PROSTILTadvance

PLANNING ADVICE



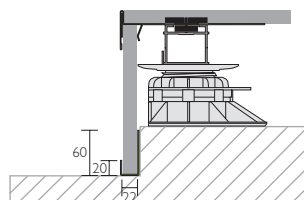
PROSTILTadvance balcony facing

To achieve a clean finish for balcony support structures, a retaining clip is screwed onto the top of the base profile, which provides support for the top part of the facing. The bottom part of the facing is girded by the PROSTILT Basic U profile and adjusted by means of a countersunk head screw on the foundation of the balcony. The profile is punched every 50 cm for this purpose in the factory.



PROSTILTadvance staircase facing

Die PROSTILTadvance staircase facing works to the same principle as the balcony facing, except that the PROSTILT Basic U profile is screwed to the foundation of the steps here.



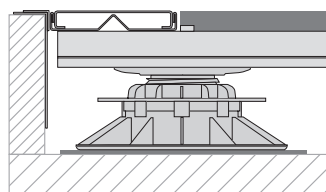


PROSTILTadvantage drainage channel

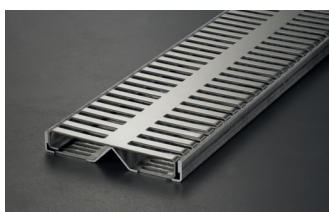
The stainless steel drainage channel, which is part of the system, meets the requirements of DIN 18040 Barrier-free construction, door stops (DIN 18040-1:4.2.3) as well as the 18531_Part 5 Balconies and walkways (6.4.6). The element is screwed onto the substructure by means of the supplied stainless steel screws. At 20 mm installation height, it optimally adapts to the conventional board strength in the outdoor area. The PROSTILT channel 150 mm is intended to complement the range of accessories, meeting the requirements of channels (flat roof guideline) – the channel should be at least 150 mm wide. It is screwed to the substructure, tile bridges of the PROSTILT support plate must be removed*.

Selling points

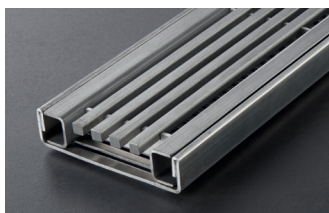
- Maintenance-free and durable
- Dimensionally stable and free from distortion
- Simple mounting (without special tools)
- High load capacity



*Further information as well as detailed technical drawings are available in the download section of our website.



**PROSTILT
channel set Classic**



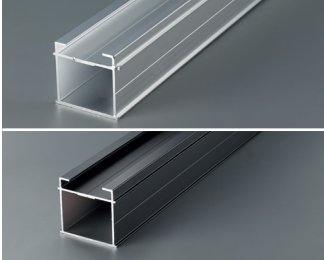
**PROSTILT
channel set Design**



**PROSTILT
channel set Design**

Customized solution, does not meet the above mentioned standards

PRODUCT OVERVIEW



PROSTILTadvance aluminium base profile

the base profile with high load capacity

- Aluminium | black (black anodised)
- Length 240 cm
- Sturdy aluminium profile with 2 mm wall
- Groove for supporting the PROSTILTadvance multiclips
- Lateral bridges as fixing aid for cross connections



PROSTILTadvance Connector L

for extending the PROSTILTadvance base profiles

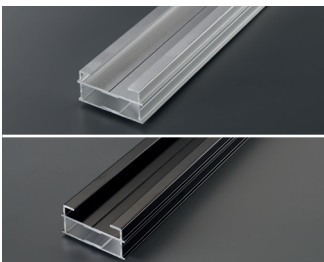
- Aluminium
- Length 20 cm
- Sturdy aluminium connecting piece



PROSTILTadvance Connector Q

for cross connections with the PROSTILTadvance base profiles

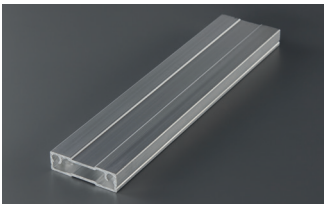
- Aluminium
- Length 5 cm
- Sturdy aluminium connecting piece
- 4 inside screw channels



PROSTILTadvance base profile slim

the base profile in slim design

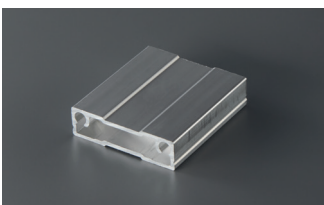
- Aluminium | Blackline (anodised black)
- Length 240 cm | Height 24 mm
- sturdy aluminium profile with 2mm walls
- a slot for the PROSTILTadvance multiclips
- lateral webs that serve as fixing aids for cross connections



PROSTILTadvance connector slim L

connector for lengthening the base profile slim

- Aluminium
- Length 20 cm
- sturdy aluminium connection piece



PROSTILTadvance connector slim Q

cross-connector for the PROSTILTadvance base profiles

- Aluminium • Length 5 cm
- sturdy aluminium connection piece
- two inside screw channels

NEW



Do you already know our screen walls PROPRIVACY? Please contact us, we will be happy to assist you!



PROSTILTAdvance
corner connector



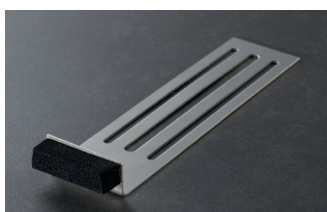
PROSTILTAdvance
flexible corner connector



PROSTILTAdvance
corner connector slim



PROSTILTAdvance
soft tape



PROSTILTAdvance
spacers



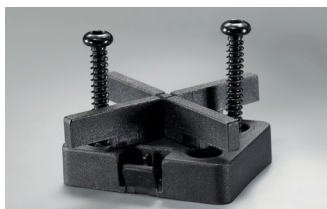
PROSTILTAdvance
clip U upper spacer



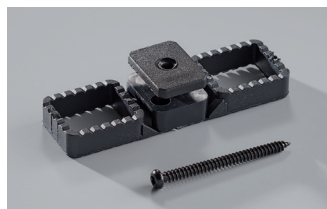
PROSTILTAdvance
lower clip



PROSTILTAdvance
multiclip T



PROSTILTAdvance
multiclip X



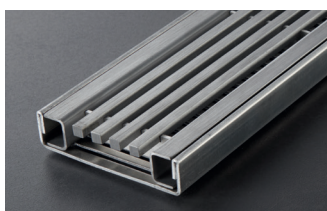
PROSTILTAdvance
multiclip T for wood



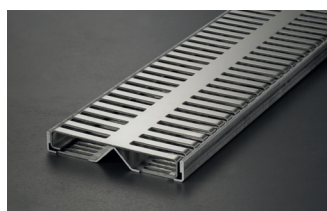
PROSTILTAdvance
spacers clip wood



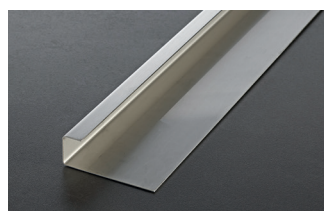
PROSTILTAdvance
slotted channel



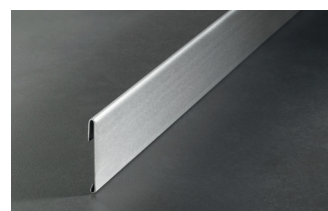
PROSTILT
channel set design



PROSTILT
channel set classic



PROSTILT
edge profile



PROSTILT
facing profile



PROSTILTAdvance
bracket for veneering



PROSTILTAdvance
accessories



Subscribe to us on YouTube and stay up to date!



Subscribe
to our
newsletter



Copyright & outdoor furniture

The images of this catalogue are the product of close cooperation with the Italian premium manufacturer for outdoor living, Talenti.

For more information on the products, please visit the website www.talenti srl.com or contact the furniture manufacturer at

+39 744 930747 (German-speaking).

Proline Systems GmbH

Kratzenburger Landstr. 11-15

56154 Boppard – Germany

Telefon +49 (0) 67 42/80 16-0

E-Mail info@proline-systems.com

Internet www.proline-systems.com

Follow us on:

