

PROLINE

SYSTEMS FOR BALCONY AND PATIO



PROSTILTadvance 2.0
ALUMINIUM SUBSTRUCTURE SYSTEM



Terrassensanierung mit
STELZLAGERN
bei Miriam Jacks

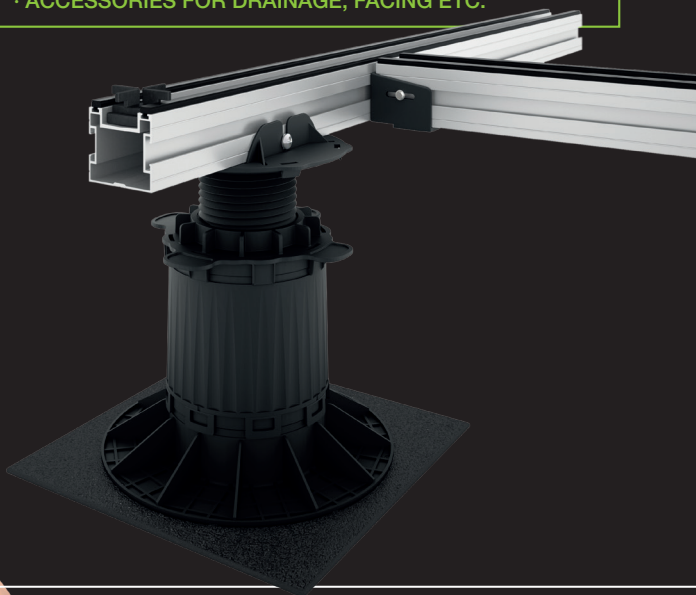
PROLINE

PROSTILTadvance 2.0

ALUMINIUM SUBSTRUCTURE SYSTEM

THE MOST IMPORTANT FACTS

- EXTREMELY HIGH CAPACITY (ALSO FOR COMMERCIAL AND PUBLIC AREAS)
- COMBINED LAYING WITH PATIO DECKING, WPC, OUT-DOOR CERAMIC,
NATURAL STONE
- WEATHER-RESISTANT
- MAINTENANCE-FREE AND DURABLE
- SIMPLE LAYING (WITHOUT SPECIAL TOOL)
- ACCESSORIES FOR DRAINAGE, FACING ETC.



HERE YOU WILL
FIND OUR PROJECT



BENEFITS AT A GLANCE

With PROSTILTadvance 2.0, you are using the best from two areas to build a permanent solution without fuss or quibble: Variable, ultra strong pedestal supports form the flexible and easy to handle basis of your patio. This then carries a support structure of aluminium sections. This results in optimum rigidity of the base as well as exceptionally high load-bearing capacity, which makes PROSTILTadvance 2.0 ideally suited to commercial and public areas.



Floorboards and slabs

Suitable for different materials:
patio decking, WPC, ceramic, natural stone



Change of floor covering possible

Combined laying possible, e.g. between wood
/ ceramic



Different patio shapes

Complete freedom in designing the patio



High load capacity

Substructure can take loads up to 5 kN/m²



Invisible screw connection

Visually attractive end result

PROSTILTadvance 2.0 IN DETAIL

Facing with edge profile and top clip



WOULD YOU LIKE INSTRUCTIONS?



Facing with edge profile bracket and connection bracket



WOULD YOU LIKE INSTRUCTIONS?



Facing with TOS T-profile



WOULD YOU LIKE INSTRUCTIONS?



System with drainage channels



WOULD YOU LIKE INSTRUCTIONS?



More information as well as detailed technical drawings are available in the download area of our website.

DESIGNING THE PATIO

WITH OUR PATIO CONFIGURATOR



Here you will find our patio configurator



Proline Systems GmbH
Kratzenburger Landstr. 11–15
56154 Boppard – Germany
Telefon +49 (0) 67 42/80 16-0
E-Mail info@proline-systems.com
Internet www.proline-systems.com



M32711_04/2022_E