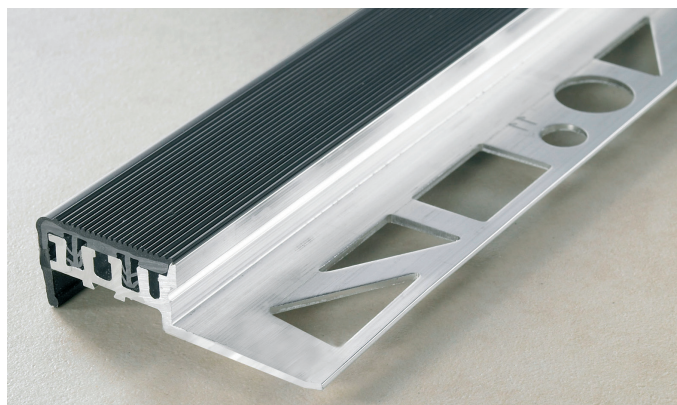
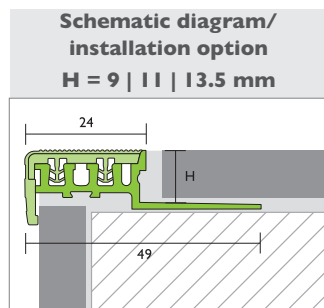


PROBASIC Aluminium with PVC inlay

Step Profiles



Fields of application:

The PROBASIC step profile made from aluminium with a combined hard/soft PVC inlay forms the non-slip, perceptible and decorative edge at the front of stairs.

The shape of the PVC inlay offers a version of tiled stair covering with high optical finish and safe step. The tough basic profile protects the edges of stairs and enables an even transition to the tiled flooring behind.

The profile protects tiled flooring against mechanical influence at the front edge of stairs.

The step profiles can be fitted using the thin-bed, medium-bed and also thick-bed method.

PROBASIC step profiles made from aluminium with PVC inlay are suitable for stairs in dry inside areas of domestic and commercial buildings (e.g. office complexes) where the stairways have moderate use.

With matching end caps made from anodised aluminium, open stair strings can be finished smartly and elegantly.

Product advantages:

PROBASIC step profiles are easy to fit. Thanks to a special design of the basic aluminium profile, secure attachment of the PVC inlay in the basic profile is realised.

The PVC inlays can still be replaced retroactively in the event of damage or wear, however.

Four different decorative colours make it possible for the front edges of the stairs to be recognised, which represents a high level of safety.

The extended face edge cover in the front step area of the profile conceals potential enamel chipping and edge chipping on cut stair tiles

Specifications:

Material	Aluminium with PVC inlay Beige Brown Black Grey
Length [m]	2.50 / 3.00
Height [mm]	9 / 11 / 13.5
Temperature range in use	+5°C to +45°C

For details, see latest price list.

Delivery form:

Bound at the ends (also in the middle on 3 m lengths) with stretch foil, packed in a dispatch box.

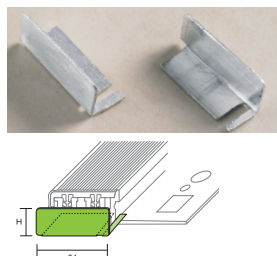
10 profiles	1 package
Packaging unit	10 / 40 items
Customs tariff number for aluminium in conjunction with PVC inlay:	76109090

For the latest order quantities (KA) and packaging units (VPE), please refer to the price list, the relevant price sheets or product news sheets, or speak to your specialist dealer.

PROBASIC Aluminium with PVC inlay

Supplementary products:

End caps in aluminium with anodised matt silver finish for PROBASIC step profile with PVC inlay, left and right versions for left and right-hand sides respectively.



Storage and transportation:

Store and transport in dry areas that are protected against dirt, impact, abrasion and other foreign matter.

To avoid any risk of deformation, do not place any load on the profiles and preferably store in the lying position.

Disposal:

Profiles that have been cleaned of foreign matter can be disposed of in a metal recycling container. PVC inlays can be disposed of in the household waste system. Observe local authority regulations respectively.

Thermal degradation:

No degradation if used in the correct manner.
Avoid excessive heat. Do not burn profile inlays.

Processing:

Preparatory measures:

The surface to which the product is being fitted must be sturdy, dry, level, straight, flush and horizontal, free of parting agents and solvents and suitable for the bonding substance.

Stairs must be prepared for the thin-bed or medium-bed method by levelling or other measures so that the line is at the desired height and depth.

The substrate must be solid and capable of bearing the intended loads.

The quality of the selected bonding screed should equate to at least C2 in accordance with DIN EN 12004..

Installation:

Select the PROBASIC aluminium step profile to suit the thickness of the intended flooring/covering. For installation, the upper edge of the profile must always be at the same height or lower than the adjacent covering edges. Check the profile for damage – use only undamaged profiles.

To cut to the required length, use suitable clamps, saws or cutting devices as well as personal protective equipment. Deburr the edges using a suitable tool. Measure stair heights and mark or create templates.

Fit PROBASIC step profile down over the arranged step with the overlapping PVC face edge cover running along the upper edge of the stair:

Apply enough thin-bed or medium-bed screed over the stair or to the underside of the profile so that complete bedding is achieved between the stair/front edge of the stair and the underside of the profile. Only apply as much thin-bed or medium-bed screed as necessary. If screed presses the overlapping PVC face edge cover out, too much has been used.

In the same way, apply thin-bed or medium-bed screed over the fresh screed bed or the ready substrate of the stair; insert the stamped fitting strip equally in the fresh bonding compound and align.

Then plaster over the fitting strip, covering it completely. Thereafter, lay the tiles on the stair surface. The flooring/covering material adjacent to the fitting strip must be laid so it is completely embedded.

If the surface as a whole has a joint pattern, the joint to the profile can be formed to match the joint width, though it should be no wider than 2 mm. The joint between the flooring/covering and the profile should be filled completely with grout.

Butting up step profiles should be with a gap of 3 mm and, on completion of work, sealed professionally using elastic colour-coded filling material. Avoid dividing into sections if possible.

During the course of work, fit the matching end caps (left and right version) to the open ends of the profiles with their narrow contact strips over the stamped strips of the step profile in the fresh thin-bed or medium-bed screed.

In addition, fix the inside of the end cap to the end of the profile using colour-coded, neutrally cross-linked silicone.

PROBASIC Aluminium with PVC inlay

Cleaning:

Use clean water, pH-neutral cleaning agent, a sponge or cleaning cloth.
Ensure that there is no sanding or grinding effect.
Do not use solvent-based cleaning agents. If necessary, use planned cleaners in an area not frequently seen or on a profile not yet fitted to check for suitability.
Do not use cleaning agents that leave an oily film and always rinse away all remnants/residue using clean water.
Perform routine cleaning regularly in accordance with local conditions.

Chemical and physical resilience:

Before using cleaning agent or collected water, check whether it has a corrosive or damaging effect on the profiles. This also applies to correct dosage during use.
The profile should never come into contact with agents containing hydrochloric or hydrofluoric acid. Any contact with chlorine bleaching agents, cement residue cleaners, strong acids or alkaline should be avoided. Do not use methylene chloride (DCM) or solvent-based substances on the profile inlays.
Aluminium reacts sensitively to potent alkaline media. Substances containing cement or lime in combination with water can alter the surface depending on the solution and time allowed to take effect. Always remove grout and joint compound immediately from the sides on display or mask off the visible sides to protect them.
Once the adhesive, grout and filling compound has hardened completely, the profile can take mechanical loads as per its intended use.
Abrasive influences or the use of equipment or execution of activities on the profile with damaging effect should be avoided as a rule.
Check cleaning tools and equipment with bristles and abrasive polishing pads to see if they scratch the surface.

Standards and regulations:

In addition to the observation and consideration of relevant specialist rules, standards and generally recognised rules of technology, attention is drawn in particular to the following regulations:

- ATV DIN 18352 Tile laying work
- ATV DIN 18332 Natural stone work
- ATV DIN 18157 Fitting ceramic trim using thin-bed process.
- ATV DIN 18202 'Tolerances in surface construction'
- ZDB bulletin 'Expansion joints' (last version)
- ZDB bulletin 'Flooring/covering subjected to high loads' (last version)
- DIN 18065 Building stairs

Important information:

- *In conjunction with the profiles, use only neutrally cross-linked silicon.*
- *The step profiles are intended for steps/stairs with pedestrian traffic.*
- *Basic profiles and inlays are subject to different thermal changes in length. Ideally, the profiles should be fitted in rooms/spaces with temperatures that remain relatively constant. The temperature at the time of installation should be the temperature expected during general use. Allow profiles to acclimatise before fitting.*
- *If joining with reaction resins, check first if these could damage the surfaces of the profile that adhesive and joining material can be removed completely.*
- *For the chemical / physical resistance of the profiles, the concentration, formulation, temperatures and composition of the affecting substances are generally responsible. Their diversity cannot be covered here. Resistance to corrosion should therefore be checked and scrutinised for each individual case.*

All information, references, instructions, basic engineering principles, regulations, standards and expertise are based on German and largely equivalent European regulations and training standards, irrespective of additional country-specific supplements and amendments.

All our specifications are based on our experience and careful analysis. We are unable to examine or influence the diversity of associated materials used and the various construction site and processing conditions in detail. The quality and function of your work is therefore dependent on your professional construction site evaluation and utilisation of the products. In case of doubt, carry out your own tests or seek technical application advice. Please refer to the laying and processing guidelines of the floor covering manufacturers or the manufacturers of associated products. All previously published product data sheets cease to apply on publication of this product data sheet.

© Proline Systems 2016 – We grant our customers the permission of reproduction and transfer to their customers, provided that clear reference is made to our copyrights. All other rights reserved.