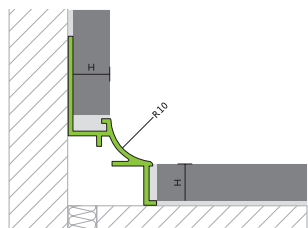


PROLINE

PROCOVEdouble anodised aluminium

Decorative square-edged profile for two-sided installation of tile flooring.



Fields of application:

The **PROCOVEdouble** square-edged profile made of aluminium is an aesthetically pleasing decorative profile with a quadrant-shaped geometry for visible accentuation of covering finishes and corner formations in rooms where a high quality of design is required. At the same time, it protects covering edges against mechanical influence and damage from light knocks/impact. When supplemented with corner pieces, perfectly formed transitions are created on interior and external corners.

The design of **PROCOVEdouble** square-edged profiles is matched to the coverings in such a way that, with a high level of application safety during installation, the loads experienced in inside domestic areas can be borne reliably and with lasting effect. The profile was designed in such a way to facilitate easy and perfect cleaning of the internal corners.

Typical areas of application are, e.g.:

- Aesthetic inclusion of wall and floor surfaces made of tiles, natural stone and artificial stone in corner areas.
- Clean and decorative finish of corner joint for tiled kitchen worktop.

Product advantages:

PROCOVEdouble square-edged profiles are easy to fit. They enhance the overall impression of ready-to-lay surfaces decoratively thanks to the symmetrical surfaces on show. The profiles are available in four anodised colours and meet the aesthetic demands in relation to the design specifications of adjacent surfaces and components.

Due to different geometries, a wide variety of covering heights can be catered for. The profiles can be shortened to length on-site.

PROCOVEdouble square-edged profile is designed to take mechanical loads (e.g. knocks, impacts and similar) along the edges of floors and wall coverings and to protect adjacent coverings.

The profile is made from aluminium and, thanks to the refined anodised finish, has a comprehensive level of resistance to the types of loads encountered during later use of the surfaces and also in terms of laying wall coverings and flooring.

Specifications:

Material aluminium	Anodised
Length [m]	2.50
For covering heights [mm]	8 - 12.5
Face edge [mm]	11

PROCOVEdouble anodised aluminium

PROLINE

Delivery form:

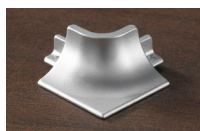
Pack of profiles fixed at ends with film.

10 profiles	1 pack
Customs tariff number	
Anodised aluminium	76061220

For batch quantities and packaging units (VPE), please refer to the price list, the relevant price sheets or product news sheets, or speak to your specialist dealer.

Supplementary products:

PROCOVEdouble external corner piece 90° made of pressure cast metal with imitation surface



PROCOVEdouble internal corner piece 90° made of pressure cast metal with imitation surface



PROCOVEdouble connector made of pressure cast metal



PROCOVEdouble cover cap left made of pressure cast metal with imitation surface



PROCOVEdouble cover cap right made of pressure cast metal with imitation surface



Note:

When using the supplementary products the **PROCOVEdouble** profiles must be installed with the punched leg facing the wall.

Storage and transportation:

Store and transport in dry areas that are protected against dirt, impact, abrasion and other foreign matter. To avoid any risk of deformation, do not place any load on the profiles and preferably store in the lying position.

Environmental protection and disposal:

Profiles that have been cleaned of foreign matter can be disposed of in a metal recycling container. Observe local authority regulations respectively.

Thermal degradation:

No degradation if used in the correct manner.
Avoid excessive heat.

Laying/processing:

Preparatory measures / site planning

The surface to which the product is being fitted must be sturdy, dry, level, straight, flush and horizontal, free of parting agents and solvents and suitable for the bonding substance.

Processing

Match the **PROCOVEdouble** square-edged profile to the intended covering thickness. For installation, the upper edge of the profile must always be at the same height or lower than the adjacent covering edges. Check the profile for damage - use only undamaged profiles. To cut to the required length, use suitable clamps, saws or cutting devices as well as personal protective equipment. Deburr the edges using a suitable tool. Remove any protective film from the visible sides of the profiles before fitting.

Place the **PROCOVEdouble** square-edged profile with the stamped fitting strip equally in the freshly-laid bonding compound and align. Then cover over completely. The flooring/covering material adjacent to the fitting strip must be laid so it is completely embedded. If the surface as a whole has a joint pattern, the joint to the profile can be formed to match the joint width, though it should be no wider than 2 mm. The joint between the flooring/covering and the profile should be filled completely with grout. Clean away any mortar/grout and adhesive residue immediately and completely using clean water and a non-abrading sponge pad or cloth from the sides of the profile on display. Bonding and joint filling substances should not dry onto the surface.

Do not use abrasive bonding and joint filling substances.

PROCOVEdouble anodised aluminium

PROLINE

Cleaning:

Use clean water, pH-neutral cleaning agent, a sponge or cleaning cloth.

Ensure that there is no sanding or grinding effect.

If necessary, use suitable cleaning paste to polish up untreated aluminium profiles if tarnished.

If necessary, use an alcohol-based cleaner or a cleaner especially developed for anodised surfaces or polishing paste. Perform routine cleaning regularly in accordance with local conditions.

Chemical and physical resilience:

Before using cleaning agent or collected water, check whether it has a corrosive or damaging effect on the profiles. This also applies to correct dosage during use.

Never use agents containing hydrochloric or hydrofluoric acid. Any contact with chlorine bleaching agents, cement residue cleaners, strong acids or alkaline should be avoided. Anodised profiles react sensitively to potent alkaline media. Substances containing cement or lime in combination with water can alter the surface depending on the solution and time allowed to take effect. Always remove grout and joint compound immediately from the sides on display or mask off the visible sides to protect them.

Once the adhesive and grout have hardened fully, the PROCOVEdouble square-edged profile is capable of bearing mechanical loads in accordance with the intended use.

Abrasive effects or the use of equipment or performance of activities on the profile that have a damaging effect should be avoided as a rule.

Check cleaning tools and equipment with bristles and abrasive polishing pads to see if they scratch the surface.

Standards and regulations:

In addition to the observation and consideration of relevant specialist rules, standards and generally recognised rules of technology, attention is drawn in particular to the following regulations:

- ATV DIN 18352 Tile laying work
- ATV DIN 18332 Natural stone work
- DIN 18202 "Tolerances in surface construction"
- ZDB bulletin "Expansion joints" (last version)
- ZDB bulletin "Coverings exposed to heavy loads" (last version)

Important information:

- In conjunction with the profiles, use only neutrally cross-linked silicon (risk of corrosion).
- If joining with reaction resins, check first whether the surface of the profile could be damaged and that adhesive and grout can be removed completely.
- Colour variations between the profiles and corner pieces cannot be ruled out due to the manufacturing process. These are subject to the characteristic, industrial processes during manufacture.
- The concentration, formulae, temperatures and compositions of the substances involved are often responsible for the chemical resistance of the profiles. Their diversity cannot be covered here. The resistance to corrosion should therefore be checked and scrutinised in individual cases.

All information, references, instructions, basic engineering principles, regulations, standards and expertise are based on German and largely equivalent European regulations and training standards, irrespective of additional country-specific supplements and amendments.

All our specifications are based on our experience and careful analysis. We are unable to examine or influence the diversity of associated materials used and the various construction site and processing conditions in detail. Fulfilment of an imposed work order and verifiable functionality of the object therefore depends on the observation of current VOB rules and the recognised rules of technology.

Our details do not absolve the accountable planner's and fitter's obligation to assess - on their own authority - the building conditions and practicability of the products. In case of doubt, carry out your own tests or seek technical application advice. Please refer to the laying and processing guidelines of the floor covering manufacturers or the manufacturers of associated products.

All product data sheets previously published are superseded by this product data sheet once published.

© Proline Systems 2016 – We grant our customers the permission of reproduction and transfer to their customers, provided that clear reference is made to our copyrights. All other rights reserved