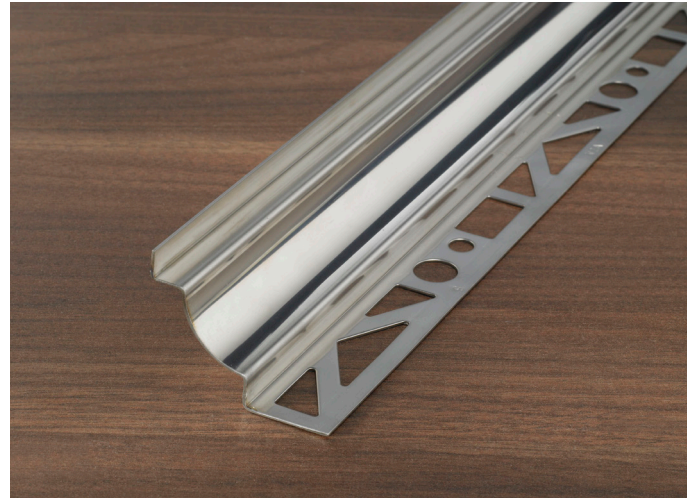
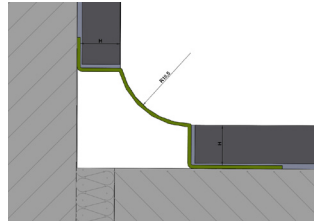


PROCOVEdouble Stainless steel 1.4301 (V2A)

Decorative square-edged profile for two-sided installation of tile flooring.



Fields of application:

The **PROCOVEdouble V2A** square-edged profile made of stainless steel is an aesthetically pleasing decorative profile with a quadrant-shaped geometry for enhanced hygienic requirements in sensitive areas. The high quality stainless steel material with 1.4301 (V2A) alloy and also the geometry of the profile ensure a high level of stability and protect the covering edges against mechanical influences and damage. When supplemented with corner pieces, perfectly formed transitions are created on interior and external corners.

The design of **PROCOVEdouble V2A** square-edged profiles is matched to the coverings in such a way that, with a high level of application safety during installation, the loads experienced in inside domestic areas, including mild chemical-related use, can be borne reliably and with lasting effect.

Typical areas of application are, e.g.:

- transitions, covering finishes in corner areas with a wide range of materials (e.g. tiles, natural and artificial stone).
- Tidy and easy-to-clean corner formations in areas where walls join floors for hygienically sensitive rooms, e.g. in hospitals, commercial catering areas, cleanrooms, washrooms and in the food preparation industry.

Product advantages:

PROCOVEdouble V2A square-edged profiles are easy to fit. They enhance the overall impression of ready-to-lay surfaces decoratively thanks to the symmetrical surfaces on show. The profiles made of shiny or brushed stainless steel meet the aesthetic demands of design specifications for adjacent surfaces and components. Due to different geometries, a wide variety of covering heights can be catered for. The profiles can be shortened to length on-site.

PROCOVEdouble V2A square-edged profile is designed to take mechanical loads (e.g. knocks, impacts and similar) along the edges of floors and wall coverings and to protect adjacent coverings. The high quality stainless steel material in 1.4301 (V2A) alloy ensures a high level of stability and resistance to chemical and physical influences. The installation permits a high aesthetic, hygienic and extremely durable and tough finish.

In use, the low temperature expansion coefficient proves to be the best possible solution for laying substances and substrates with cement, lime or gypsum. This advantage also applies to covering materials, e.g. ceramic, natural or artificial stone, mainly in areas where significant temperature differences in the covering are expected (e.g. underfloor heating, surfaces with direct sunlight and similar)

PROCOVEdouble stainless steel 1.4301 (V2A)**Specifications:**

Material stainless steel	Shiny	Brushed
Alloy	1.4301 (V2A)	1.4301 (V2A)
Length [m]	2.50	2.50
For covering heights [mm]	7 - 16	7 - 16
Visible side [mm]	14.5	14.5

Delivery form:

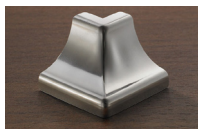
Profiles partly individually wrapped with protective film. Bound at both ends, in some cases also in the middle, wrapped in stretch film.

10 profiles	1 pack
Customs tariff number	
Stainless steel	72224050

For batch quantities and packaging units (VPE), please refer to the price list, the relevant price sheets or product news sheets, or speak to your specialist dealer.

Supplementary products:

PROCOVEdouble V2A
External corner piece 90°



PROCOVEdouble V2A
Internal corner piece 90°



PROCOVEdouble V2A connector



PROCOVEdouble V2A cover caps
for left and right, made of pressure cast
metal with imitation surface

**Storage and transportation:**

Store and transport in dry areas that are protected against dirt, impact, abrasion and other foreign matter. To avoid any risk of deformation, do not place any load on the profiles and preferably store in the lying position. Protect foil-wrapped profiles from sunlight / UV rays.

Environmental protection and disposal:

Profiles that have been cleaned of foreign matter can be disposed of in a metal recycling container. Observe respective local authority regulations.

Thermal degradation:

No degradation if used in the correct manner.
Avoid excessive heat.

Laying/processing:**Preparatory measures / site planning**

The surface to which the product is being fitted must be sturdy, dry, level, straight, flush and horizontal, free of parting agents and solvents and suitable for the bonding substance.

Processing

Choose **PROCOVEdouble V2A** square-edged profile according to intended covering thickness. For installation, the upper edge of the profile must always be at the same height or lower than the adjacent covering edges. Check the profile for damage - use only undamaged profiles.

Remove any protective film from the visible sides of the profiles before fitting. To cut to the required length, use suitable clamps, saws or cutting devices as well as personal protective equipment. Deburr the edges using a suitable tool. Use cutting discs to cut PROLINE to size. Tools that have already been used for other metals must no longer be used for stainless steel. Cutting tools must be free of iron, chlorine and sulphur.

Place the **PROCOVEdouble V2A** square-edged profile with the stamped fitting strip equally in the freshly laid bonding compound and align. Then cover over completely. The flooring/covering material adjacent to the fitting strip must be laid so it is completely embedded. If the surface as a whole has a joint pattern, the joint to the profile can be formed to match the joint width, though it

PROCOVEdouble stainless steel 1.4301 (V2A)

should be no wider than 2 mm. The joint between the flooring/covering and the profile should be filled completely with grout. Clean away any mortar/grout and adhesive residue immediately and completely using clean water and a non-abrading sponge pad or cloth from the sides of the profile on display. Bonding and joint filling substances should not dry onto the surface. Do not use abrasive bonding and joint filling substances.

Cleaning:

Use clean water, pH-neutral cleaning agent, a sponge or cleaning cloth.

Ensure that there is no sanding or grinding effect.

Clean profiles with suitable cleaning paste as required. If necessary, use an alcohol-based cleaner or a cleaner especially developed for stainless steel or polishing paste.

Perform routine cleaning regularly in accordance with local conditions.

In places where substances containing chloride are used, clean the profiles of collected water regularly to prevent concentrations building up.

Chemical and physical resilience:

Before using cleaning agent or collected water, check whether it has a corrosive or damaging effect on the profiles. This also applies to correct dosage during use.

Never use agents containing hydrochloric or hydrofluoric acid. Any contact with agents containing chloride ions (e.g. found in some cement residue cleaners, road grit, chlorine treated swimming pool water, brine water), strong acids or alkaline should be avoided. Stainless steel reacts with oxygen in the air and forms a protective layer that becomes damaged upon abrasive contact with normal steel or iron and flying sparks from welding and cutting work, thereby resulting in corrosion.

Once the adhesive and grout have hardened fully, the **PROCOVEdouble V2A** square-edged profile is capable of bearing mechanical loads in accordance with the intended use. Abrasive effects or the use of equipment or performance of activities on the profile that have a damaging effect should be avoided as a rule. Check cleaning tools and equipment with bristles and abrasive polishing pads to see if they scratch the surface.

PROCOVEdouble stainless steel 1.4301 (V2A)**Standards and regulations:**

In addition to the observation and consideration of relevant specialist rules, standards and generally recognised rules of technology, attention is drawn in particular to the following regulations:

- ATV DIN 18352 Tile laying work
- ATV DIN 18332 Natural stone work
- ATV DIN 18157 Ceramic trim version with thin-bed method
- ATV DIN 18202 "Tolerances in surface construction"
- ZDB bulletin "Expansion joints" (last version)
- ZDB bulletin "Coverings exposed to heavy loads" (last version)
- Information in English can be found at <http://www.bssa.org.uk>, particularly: <http://www.bssa.org.uk/topics.php?article=77>.

Important information:

- In conjunction with the profiles, neutrally cross-linked silicon should be preferred.
- If joining with reaction resins, check first whether the surface of the profile could be damaged and that adhesive and grout can be removed completely.
- Iron particles from tools, scaffolding, transportation devices, etc. must be removed without delay. Grinding/sanding dust, swarf and welding splashes from structural steel work could lead to corrosion.
- Colour variations between the profiles and corner pieces cannot be ruled out due to the manufacturing process. These are subject to the characteristic, industrial processes during manufacture.
- The concentration, formulae, temperatures and compositions of the substances involved are usually responsible for the chemical / physical resistance of the profiles. Their diversity cannot be covered here. The resistance to corrosion should therefore be checked and scrutinised in individual cases.
- Chloride ions present in fluids, condensation and chemicals have a corrosive effect. Prevent these burdens where possible or eliminate them through thorough cleaning. If loads occur only briefly, do not exceed a concentration of 250 mg/ltr.
- Protect existing protective film against the sun's rays and UV light and remove completely before fitting.

All information, references, instructions, basic engineering principles, regulations, standards and expertise are based on German and largely equivalent European regulations and training standards, irrespective of additional country-specific supplements and amendments.

All our specifications are based on our experience and careful analysis. We are unable to examine or influence the diversity of associated materials used and the various construction site and processing conditions in detail. Fulfilment of an imposed work order and verifiable functionality of the object therefore depends on the observation of current VOB rules and the recognised rules of technology.

Our details do not absolve the accountable planner's and fitter's obligation to assess - on their own authority - the building conditions and practicability of the products. In case of doubt, carry out your own tests or seek technical application advice. Please refer to the laying and processing guidelines of the floor covering manufacturers or the manufacturers of associated products.

All product data sheets previously published are superseded by this product data sheet once published.

© Proline Systems 2016 – We grant our customers the permission of reproduction and transfer to their customers, provided that clear reference is made to our copyrights. All other rights reserved.