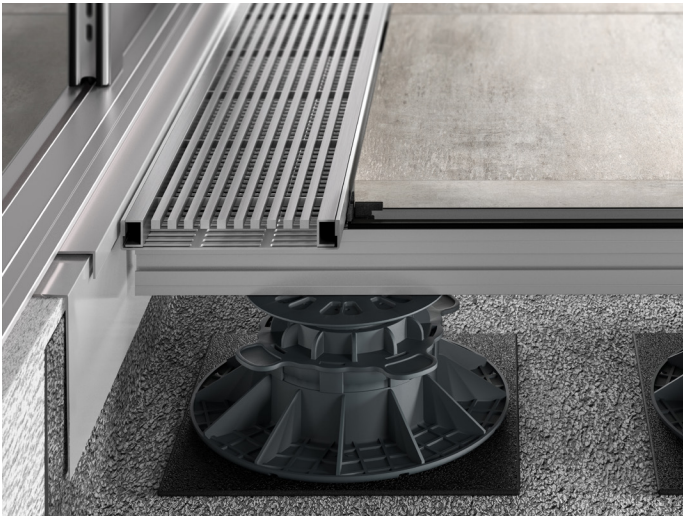


# PROSTILTadvance 2.0 channel sets

## Aluminium subconstruction system for balconies and terraces



### Use and applications

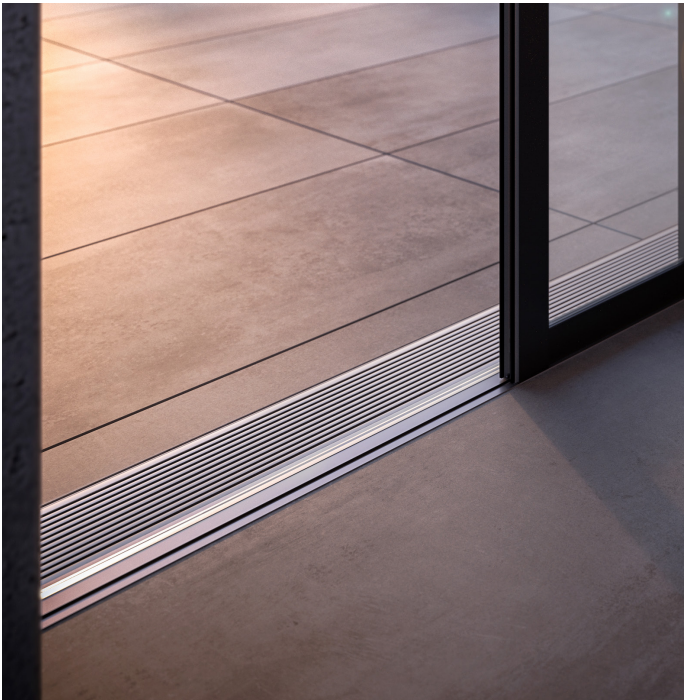
Transitions between outside and inside areas, particularly with regard to accessibility, present sensitive areas in relation to drainage systems. Precipitation in the form of snow or rain can build up in transition areas. Floor-level elements such as doors and window façades, as well as other façades, which must not be exposed to waterlogging, require additional measures in the form of drainage. Our channels are the perfect remedy against this, as they drain even large quantities of water effectively.

### Technical data

Material	channel main body: Polished aluminium Channel cover: Stainless steel V2A
Properties	sea water-proof, weather-resistant; high impact, blow and breaking strength; great dimensional stability high durability; fire classification A1 (in accordance with DIN 4102)

### Product advantages

- Versatile applications, i.e. for the drainage of balconies, patios, footpaths and yards without traffic as well as safe drainage of large areas
- Extensive fields of application, amongst others to avoid water accumulation within bordered areas (e.g. loggias) and in front of floor-level elements such as façades
- Manufacture of a second usable (drainage) level under the walkable flooring
- Fast and easy assembly
- Straightforward cleaning
- Low maintenance cost and easily reversible



AUSGABE\_2023\_01

# PROSTILTadvance 2.0 channel sets

Aluminium subconstruction system for balconies and terraces

## Overview channel sets

### Overview channel set Design

#### Channel set design

Main body aluminium

Drainage cover stainless steel (V2A)

Dimensions: 1000 x 21 x 85 mm (79858) or  
1000 x 21 x 150 mm (79859)



#### Channel set design with mitre cut

Main body aluminium (brushed)

Drainage cover stainless steel (V2A)

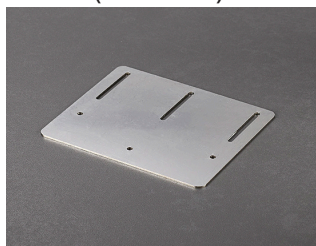
Mitre cut left or right each 1000 x 21 x 85 mm  
(79840 / 79841) and 1000 x 21x 150 mm  
(79842 / 79643)



#### Connector for channel set design

Material: aluminium in two different widths  
incl. fastening screws

Item no.: 79848 (85 mm) 79849 (150 mm)



# PROSTILTadvance 2.0 channel sets

Aluminium subconstruction system for balconies and terraces

## Overview channel set Classic

### Channel set Classic

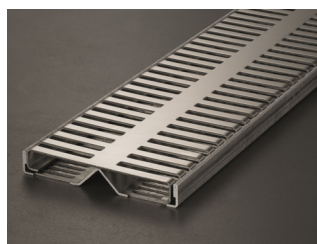
Main body aluminium

Drainage cover stainless steel (V2A)

incl. fastening screws and connector

Dimensions: 1000 x 21 x 85 mm (79860) or

1000 x 21 x 150 mm (79865)



### Connector for channel set Classic

Material: aluminium

Item no.: 79862 (85 mm) und 79867 (150 mm)



### Head pieces

for channel set Design and Classic

Material: aluminium (brushed)

Packing unit: set of 2

Item no.: 79856 (85 mm) 79857 (150 mm)





# PROSTILTadvance 2.0 channel sets

## Aluminium subconstruction system for balconies and terraces

### Overview channel set Basic

#### Channel set Basic

Main body aluminium

Drainage cover galvanised steel

Dimensions: 1000 x 21 x 85 mm (79844) oder

1000 x 21 x 150 mm (79845)



#### Please order connector separately:

For 79844 (B = 85 mm) connector for channel set Classic (79862), For 79845 (B = 150 mm) connector for channel set Design (79845)

### Overview slotted channel

#### Slotted channel

Dimensions: 1200 x 26 x 29 mm

Material: stainless steel V2A

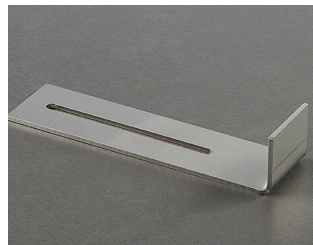
Item no.: 79835



#### Bracket for slotted channel

Material: stainless steel (V2A)

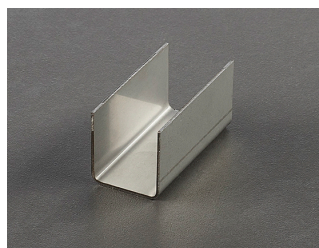
Item no.: 79836



#### Connector for slotted channel

Material: stainless steel (V2A)

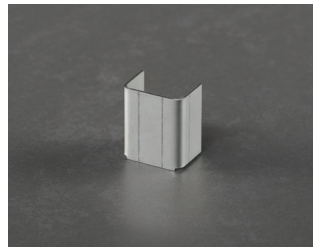
Item no.: 79837



#### End cap for slotted channel

Material: stainless steel (V2A)

Item no.: 79838



# PROSTILTadvance 2.0 channel sets

## Aluminium subconstruction system for balconies and terraces

### Standards and regulations

It is recommended that the following standards and regulations are taken into account:

- DIN 18195 “Waterproofing”
- DIN 18560 “Screeds in building construction”
- Regulations of the German roofing trade, “Regulations for roofs with sealing”
- ZDB data sheet “Outdoor floorings”
- DIN 18040-2 barrier-free construction, flats
- DIN 1986-100 “Drainage systems for buildings and properties”
- Structural information on natural stone, 1.4 “Outdoor floorings” from the German Natural Stone Association
- ATV DIN 18336 Sealing work
- ATV DIN 18332 Natural stone laying

### Important notes

- PROSTILTadvance 2.0 is suitable for creating walkable paved areas in private residential areas and publicly used areas; the area must not be driven on.
- Floorings such as ceramic, concrete or natural stone slabs must be checked in advance for their suitability for Prostiltadvance 2.0, or must be approved by the manufacturer for use.
- Provided no facing solution is required, slabs of > 21 mm thickness can also be laid.
- When laying the flooring, the field width, load capacity and permissible span width must be observed.
- For free laying, the free flooring edges must be secured with suitable edging (e.g. in conjunction with PROSTILTadvance 2.0 clips top and bottom, PROSTILTadvance 2.0 facing profile) against slippage of the flooring.

*All details, references, notes, applicable specialist regulations, guidelines, standards and specialist knowledge are directed towards the German, and insofar as they are congruent, to the existing European regulations and training standards, irrespective of additional country-specific extensions or modifications. All our information is based on our experience and carefully performed tests. The variety of additional materials that might be used and differing construction and working conditions cannot be individually checked or influenced by us. The fulfilment of an outstanding service contract and the manufacturing of a demonstrable functional capability of the trades is therefore dependent on adhesion to the current VOB (German Construction Contract Procedures) regulations and recognised technological rules. Our details do not preclude responsible planners and processors from their duty to independently assess the conditions of a building and suitable application of the products. In case of doubt, please seek technical application advice or carry out your own tests. The manufacturer's guidelines for laying and processing the surfacing material or the guidelines for other products used must be observed. The publication of this product data sheet invalidates all previous product data sheets.*

AUSGABE\_2023\_01